

Included in the Box

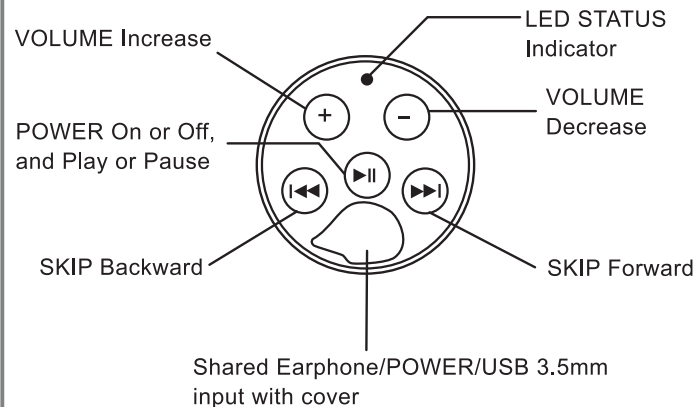
Confirm the following bundled items

- Quick Installation Guide/Safety Instructions/Warranty Card (This sheet)
- PL-BPAP (This product)
- USB Cable
- Bicycle handlebar bracket

Device Features

- The speaker output quality will not decay during the life of battery
 - The internal rechargeable long-life Li-ion battery provides for extended use in outdoor settings.
 - When the earphone is plugged in the ϕ 3.5mm jack, the device switches from the speaker to the earphone automatically.
 - The device supports MP3/WMA format.
 - This product can be used not only for bicycle but also used for outdoor usage.*
- *Not support for water-proof or drip-proof

< Buttons Function >



< Charging the Device >

- The device needs to be fully charged before its initial use.
- Attach the 3.5mm connector at one end of the cable to the device and the USB at the other end to a computer.
- The LED indicator will illuminate during charging, and it will go out when the device is fully charged
- The device will shut off automatically when the USB cable is disconnected (including during charging or data transmission).

For using this product

< Downloading Music >

- Connect the device to a computer through the USB cable. The device will be operated as a flash drive for downloading music.
- It is recommended to create separate folders for a variety of music and for easy access and downloading.
- To listen to music with this product, connect it to the PC and copy the MP3 file or the WMA file.
- The WMA format supports Windows Media Audio up to and including version 9.
*It does not support "Digital Rights Management (DRM)" format.

< Instructions for Operating the Device >

- 1. Power on**
Pressing the "▶||" button lightly, the device will play song automatically after the LED indicator stays on for approximately five seconds.
- 2. Power off**
Pressing the "▶||" button for about 4 seconds, the LED indicator will flash rapidly and go out and the device is turned off.
- 3. Pause**
Pressing the "▶||" button lightly during playing will cause the LED to stay on and the player will enter the "Pause" mode. Pressing the "▶||" button lightly again will return the player to normal play status. Please note that the system will turn itself off automatically after 3 minutes in "Pause" mode.
- 4. Change songs during the playing**
 - Pressing the "▶||" button lightly, the device will skip to the next song.
 - Pressing the "◀◀" button lightly, the song will play again if the song has been played for more than 5 seconds, otherwise, the device will choose the previous song
 - Press "▶||" button for 3 seconds. The LED blinks 3 times and the next folder will be played.
 - Press "◀◀" button for 3 seconds. The LED blinks 3 times and the previous folder will be played.
 - Press "▶||" button for 5 seconds. The LED blinks 3 times, the first music will be played and all of the music will be played in order.

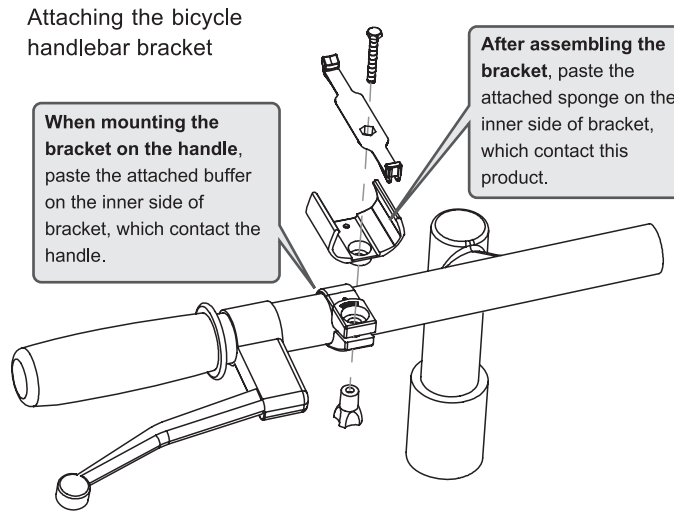
- 5. Playing mode (Sequential Play or Shuffle Play)**
The default mode of playing is set to "Sequential Play". To change to "Shuffle Play", press "◀◀" button for about 5 seconds. To change back to the "Sequential Play", press "◀◀" button for about 5 seconds again.

- 6. Sleep mode**
While playing, press "▶||" button 6 times quickly within 10 seconds (An obvious playing or pause of the music is an indicator of an effective pressing), the flash pattern of the LED indicator will change and the device will enter the sleep mode. About 30 minutes later, the volume will decrease about half. About another 30 minutes later, the device will turn itself off automatically. To release from the sleep mode, press the [+] or [-] button.

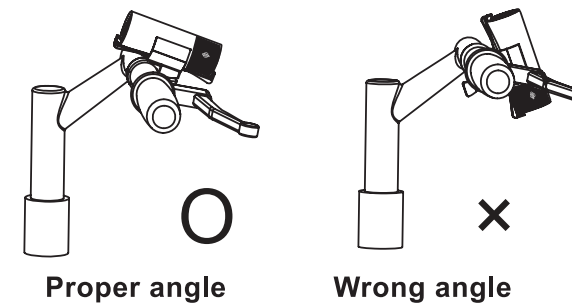
< The LED Indicator >

- The LED indicator will flash once every two seconds when the device is playing normally
- The LED indicator will illuminate for two seconds and go out for two seconds continuously when no music has been downloaded onto the device.
- The LED indicator will flash rapidly when the battery is low and it continues to flash rapidly until the battery is dead.
- The LED indicator stays on when the battery is charging and goes out when the charging is completed.
- The LED indicator will continue to flash while the songs are being downloaded.
- The LED indicator will illuminate for four seconds and go out for four seconds continuously when it is in the SLEEP mode.

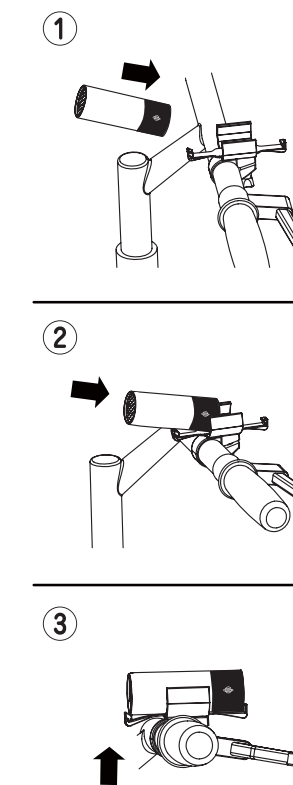
How to attach to the bicycle



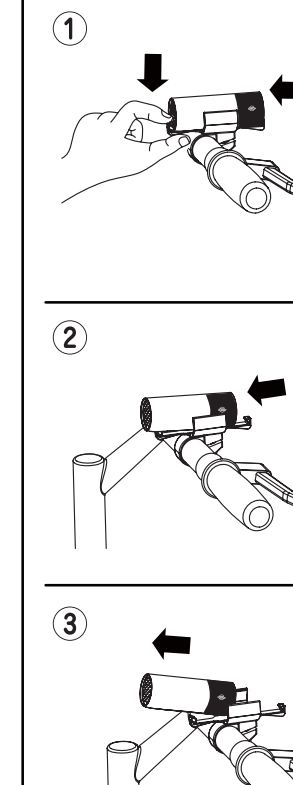
Be careful for its angle for attaching the bracket



< Procedure for the mounting >



< Procedure for the dismounting >



Troubleshooting

< To Reset the System >

When the device malfunctions, press "◀◀" and "▶▶" buttons simultaneously and the device will forcibly shut down and reset itself.

< Troubleshooting >

- The LED indicator is functioning normally, but there is no sound

Check whether or not the earphone is plugged in and the USB cable is still connected

- When the device is not playing normally or behave abnormally when connected to the computer

Charge the device for approximately 30 minutes and then reset the system.

Specification

Audio quality	
Frequency response	20Hz~20KHz : -2db~+2db
SNR(Speaker output)	88db (2.0W output)
THD+N(Speaker output)	1% (1.6W output) / 10%(2.0W output)
SNR(Headphone output)	90db (32Ω)
THD+N(Headphone output)	0.6% (32Ω)
Hardware Specifications	
LED	Status indicator
Headphone output	ϕ 3.5mm Headphone jack
Battery	Rechargeable Li-ion battery
Charging time	6 hours(through USB cable)
Playing time	9 hours(Speaker out) / 60 hours(Headphone out)
Music format	MP3(~384kbps) / WMA(~384kbps. Not support DRM media content)
Playing mode	Sequential Play/Shuffle Play
Interface	USB 2.0
Support OS	Windows 7(32/64bit) / Vista(32/64bit) / XP, MAC OS X 10.6/10.5/10.4
Capacity	2GB
Dimension	ϕ 32 (D) × 88 (L) mm (not include bracket)
Weight	Approx 106g (not include bracket)
Operating Temperature	-10~50°C

Notes

- *Storage file system is FAT16/FAT32
- *Playing time will vary depends on volume
- *Headphone, USB and charge in the same jack
- *These specs will be changed without notice. Please be forewarned and refer to our home page at <http://www.planex.net> for the latest information.

- PLANEX COMMUNICATIONS is the registered trademark of PLANEX COMMUNICATIONS INC.
- Other company name and product names are the registered trademarks or trademarks of their respective owners.
- Note : Before using your PLANEX COMMUNICATIONS product, read the operation manual that came with the product to ensure the correct, safe use of the product.