

Quick Installation Guide
Bluetooth EDR2.0 Mini USB Dongle
BT-MicroEDR
 English Ver.: 1.0_E

ADD : 9F,-1 No.188, Baociao Rd., Sindian City, Taipei County 231, Taiwan
 TEL : +886-2-7705-6689 FAX : +886-2-7705-6688 http://www.planex.net

Chapter1
Package Contents

Thank you for purchasing PCI Bluetooth EDR2.0 Mini USB Dongle. If any items listed below are damaged or missing, please contact your dealer immediately.

- BT-MicroEDR x1
- QIG(Quick Installation Guide) x1
- CD-ROM(Driver & Utility) x1
- Warranty Card x1

Chapter2
Physical Description



Chapter3
Installation and Configuration

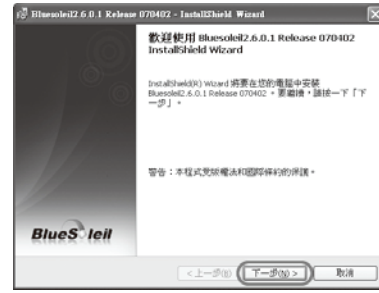
1 Driver & Utility Installation

Please follow the steps below to install the driver and utility.

- (1) Insert the CD-ROM which has the driver and utility of BT-MicroEDR into your computer's CD-ROM player. The computer will automatically run the setup program from the CD-ROM.
- (2) The pop-up asks you to choose the language for installation. Select a language and then click "OK" to continue.



- (3) The InstallShield Wizard will continue install the driver and utility of BT-MicroEDR on your computer. Click "Next" to proceed.



- (4) After read the License Agreement, you may choose "I accept the terms in the license agreement" and then click "Next" to continue installing. Or you can choose "I do not accept the terms in the license agreement" and "Cancel" the installation.



- (5) Choose if you want to put shortcuts on Startup folder or Desktop, and then click "Next".



- (6) If you want to change the destination folder, please click "Change...", or just click "Next" without changing anything to continue.



- (7) InstallShield Wizard is ready to begin the installation, please click "Install" to start installing the program.



- (8) Click "Finish" to exit the wizard.



- (9) If you chose to show shortcuts on the Startup menu or Desktop, you may see the following pictures after the installation.

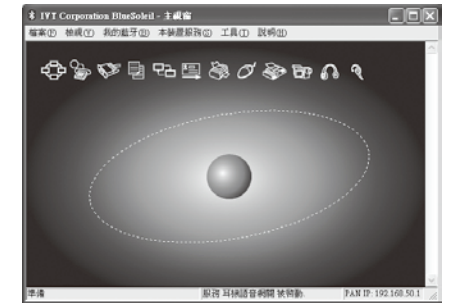


2 Basic Configuration

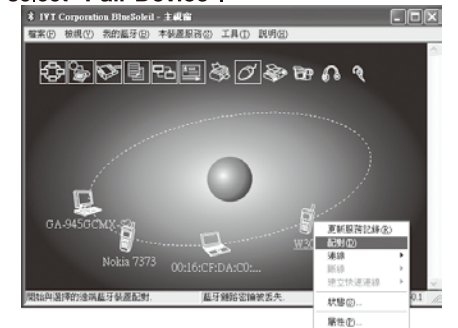
- (1) Click on the BlueSoleil BlueSoleil icon to start using the Utility. You may set the Device Name and Device Type for your computer on the following window and then click "OK" to enter the utility.



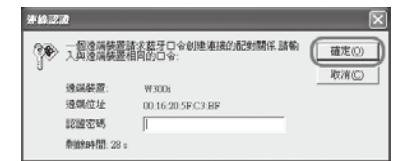
- (2) Click the globe in the middle of the screen to start detecting the nearby devices which have Bluetooth.



- (3) Right click on the icon of the device which you want to connect with and select "Pair Device".



- (4) Here we take a mobile phone equipped with Bluetooth for example. If you want to pair the remote device (mobile phone) with the device connecting with BT-MicroEDR (PC), first, you have to enter a "Passkey" (for example, "0000" or "1234") for a device and then click "OK". After that, you have to enter the same "Passkey" on the other device to pair the devices. Please be aware that there is a time limit for the connection, so you must enter the Passkey in 30 seconds.



- (5) If the devices have been successfully paired, there will be a red check beside the icon of the remote device.

