

Quick Installation Guide

Wireless LAN 802.11g Network Camera

CS-W02G

English Ver.: 1.0_E

PLANEX COMMUNICATIONS INC.

Warning Before Install

- Do not power off the Network Camera as soon as it is found smoking or smelt unusual.



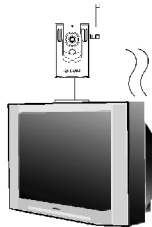
Contact your distributor when such cases happen.

- Keep the Network Camera away from the water. If the Network Camera is wet, power off immediately.

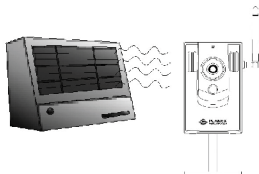


Contact your distributor when such cases happen.

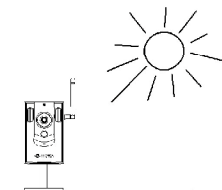
- Do not place the Network Camera around the heat sources such as television or oven.



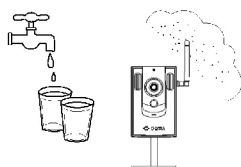
- Refer to your user's manual for the operating temperature.



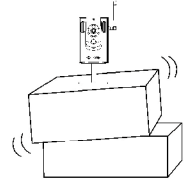
- Keep the Network Camera away from the direct sunlight.



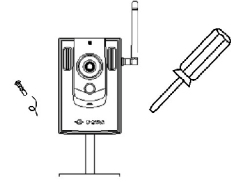
- Do not place the Network Camera in high humid environments.



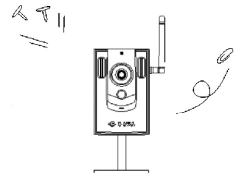
- Do not place the Network Camera on unsteady surfaces.



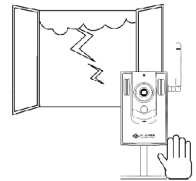
- Do not disassemble the Network Camera.



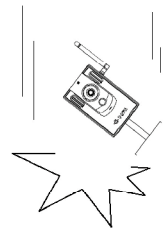
- Do not insert any object into the Network Camera, such as needles.



- Do not touch the Network Camera when it's lightning.

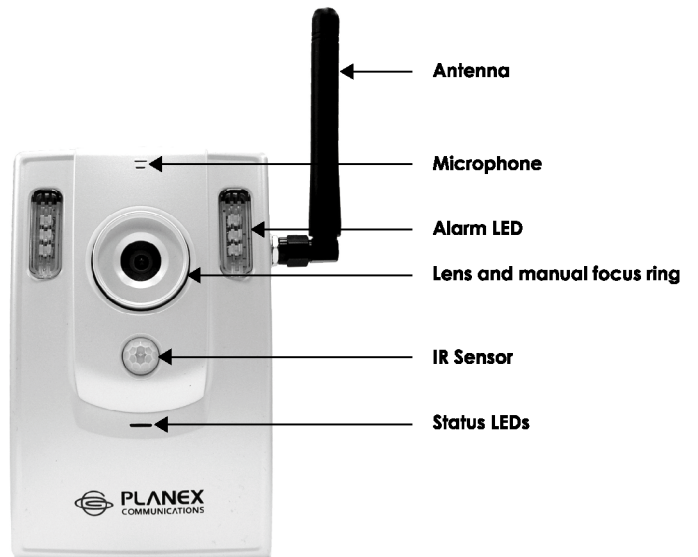


- Do not drop the Network Camera.

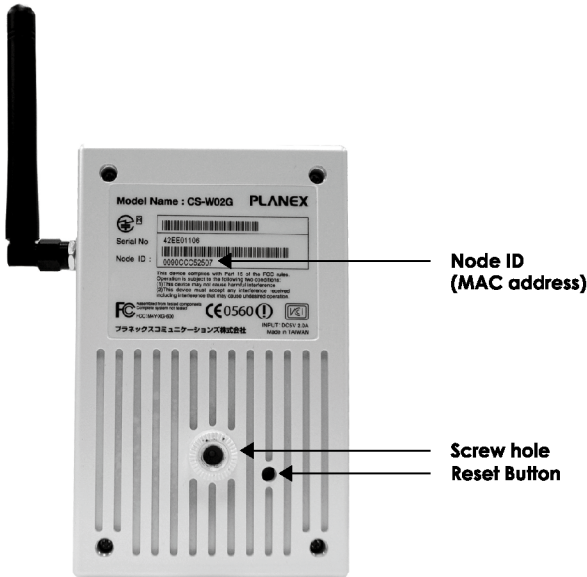


Physical description

- Front panel



■ Rear panel



Install your Network Camera in Ethernet network

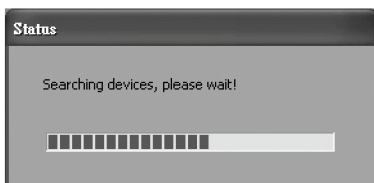
2. Connect power cord to a power outlet.



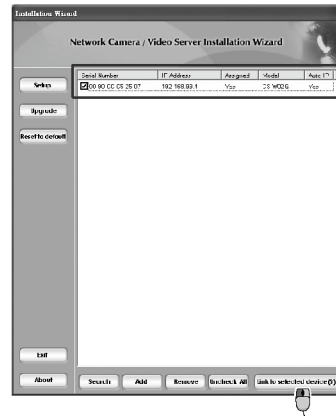
1. Use Ethernet cable to make connection from Ethernet port to the hub.
- Use Category 5 cross cable when the network camera is directly connected to PC.

Assign IP address

1. Run the **Installation Wizard** under the software Utility directory from software CD.
2. The program will search the cameras on the same LAN.

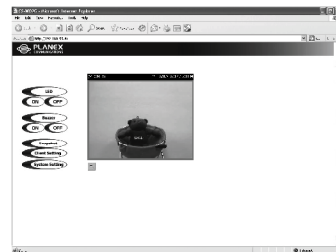


3. After searching, the main installer window will pop up. Click on serial numbers that match the MAC address.



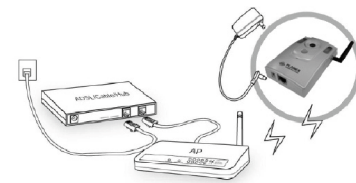
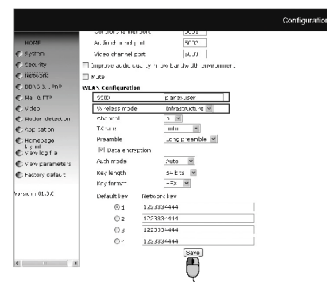
4. Click **Link to selected device(s)** to connect the internet Explorer to the Network Camera.

The Internet Explorer Connects to the Network Camera



Set up your wireless configuration for the Network Camera

1. Check the SSID currently set on your wireless access point(AP).
2. Go to CS-W02G System Setting >>> Network >>> WLAN Configuration
3. Type in the SSID consistent with the setting on your AP.
4. Select the Wireless mode as **Infrastructure**.
5. Click **SAVE**



Note:

1. SSID abbreviated from Service Set Identifier is the name assigned to the wireless network. The CS-W02G's factory SSID setting is set to **planexuser**.
2. Select **Ad-hoc** wireless mode if you want the CS-W02G to communicate without using an AP or wireless router.

For setup wireless mode and further configuration. Please check user's manual on the CD-ROM.