



Quick Installation Guide

Wired LAN Network Camera

CS-TX04F

Wireless/Wired LAN Network Camera

CS-W04G

PLANEX COMMUNICATIONS INC.

Check your package contents

- CS-TX04F or CS-W04G (this product)
- AC Adapter
- Camera Stand Kit
- LAN Cable
- Antenna (*Wireless Model Only)
- Quick Installation Guide (this document)
- CD-ROM (software & users manual)
- Safety Information / Warranty Card

If any of the above items are missing, please contact your supplier.

System Requirement

System requirement for PC, MAC or Notebook PC to access the Internet Camera are:

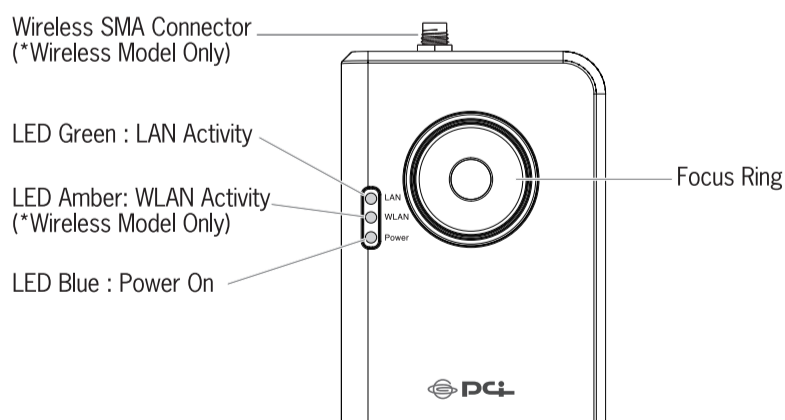
- OS System: Windows XP + SP2, Server 2003, Vista32/64
- CPU: Intel Pentium III 750MHz above or Intel Celeron 1GHz above
- Memory Size: 128MB (256MB recommended)
- VGA Card Resolution: 800 x 600 or above

LED and Focusing

The Camera head and its focus ring allow you to modify the aim and focus of the Camera. To adjust the Camera's focus, rotate the dark focus ring.

There are three LEDs indicating the camera status and networking status.

Power	When the camera is power on and ready for access, the LED will light.
LAN	When the Internet Camera is linking to wired network, the LED is lighting. The LED is flashing when video is transmitted or received through wired network.
WLAN	When the Internet Camera is linking to wireless network, the LED is lighting. The LED is flashing when video is transmitted or received through wireless network.



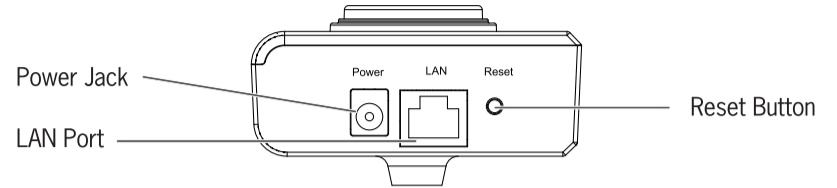
Camera Ports

The Camera features two ports and a Reset button.

Antenna	Standard reverse SMA connector where any antennas with reverse SMA connector can connect to the Internet Camera.
Power	The Power port is where you can connect the power adapter.
LAN	The LAN port is where you can connect the Ethernet network cable.

Reset

- 1.If problems occur with your Internet Camera, press the reset button with a pencil tip (for less than 2 seconds) and the Internet Camera will reboot itself with your configurations.
- 2.If problems persist or you experience extreme problems or you forgot your password, press the reset button for longer than 5 seconds. The Internet Camera will reset itself to the factory default settings (warning: your original configurations will be replaced with the factory default settings).



Installation Procedure

1. Unpack the Internet Camera package and verify that all the items listed in the Chapter 1 are provided.
2. Connect the Internet Camera to your network by attached the network cable from the switch/router to the LAN port of the Internet Camera.
3. Connect the power adapter to the Internet Camera and plug the power adapter to power outlet. The Internet Camera will be powered on. When the Internet Camera is ready, the Ready LED will light.

! It is highly recommended to use the power adapter shipped with the Internet Camera, do NOT use any other power adapter from any sources.

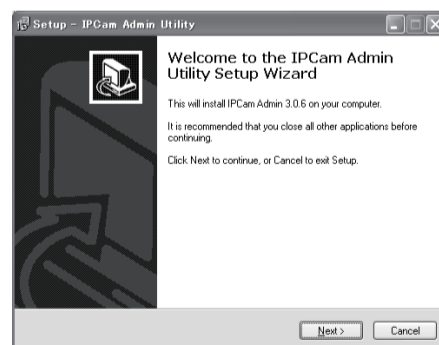
Software Installation

Follow the simple steps below to run the Install Wizard to guide you quickly through the Installation process. The following installation is implemented in Windows XP. The installation procedures in Windows XP/Server 2003/Vista are similar.

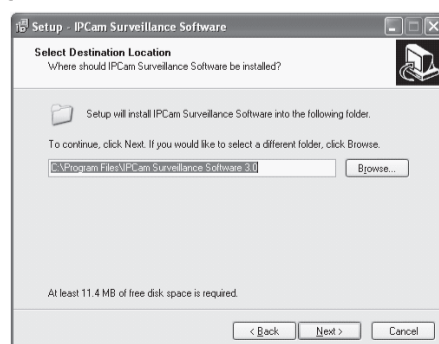
- 1 **Insert the CD shipped along with the Internet Camera into your CD-ROM drive. The "Autorun.exe" program should be executed automatically. If not, run "Autorun.exe" manually from "Autorun" folder in the CD.**
- 2 **The Install Wizard will show four selections, select the program you want to install or click "Exit" to install the program later. The following installation steps are the demonstration of "Install Administrator Utility" and "Install 16 Chan Camera Viewer".**



- 3 **Click "Install Administrator Utility" and when the following window appears, click 'Next'.**

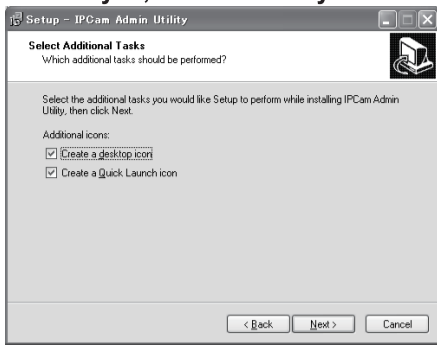


- 4 **You can specify the destination folder of software installation, you can just use the default folder, and click 'Next' to continue.**

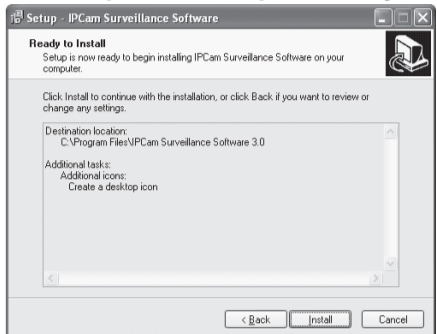


Software Installation

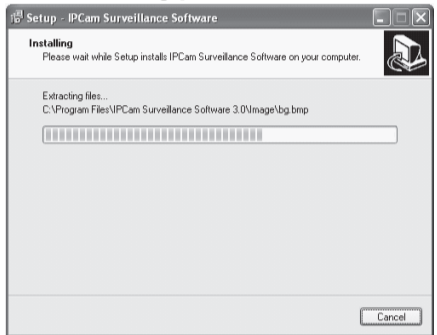
5 If you need installation program to create a desktop icon or a quick launch icon for you, click all items you need here, and click 'Next' to continue.



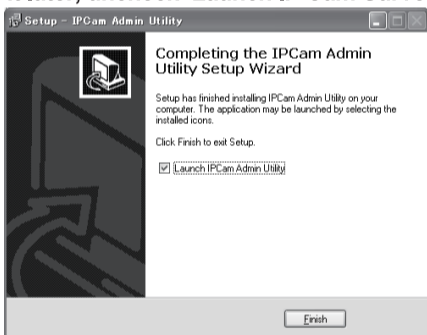
6 Here lists all options you chose in previous steps, if everything's correct, click 'Install' to start installing procedure, or click 'Back' to go back to previous step to modify installing settings.



7 The installing procedure will take some time, please be patient.



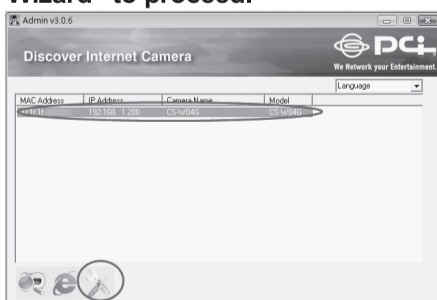
8 When you see this window, it means the software installing procedure is complete. Please click 'Finish' to finish the procedure. (IP camera surveillance software will start after you click 'Finish' button, if you want to start it later, uncheck 'Launch IP Cam Surveillance Software' box)



9 After finished the installation of Administrator Utility, please go back to wizard page and click "Install 16 Chan camera viewer", the system will start running viewer installation and the procedures are similar to the installation of administration utility.



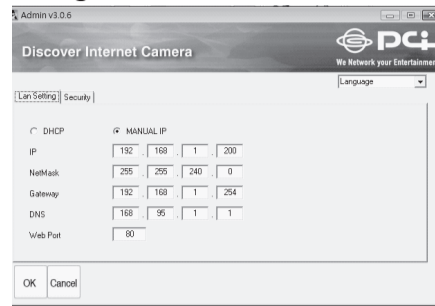
10 When the installation is completed. Please run "Administrator Utility". On the Internet Camera first page, the cameras found in the network are listed. Choose the one you want to configure and click "Setting Wizard" to proceed.



11 Please enter the default password "password" and click "OK" to login to the IP setup page.



12 Internet Camera is working through the network (TCP/IP Protocol). The IP address setting must be correct, or you cannot access to the camera. The wizard program will detect the IP address status of your network automatically and suggest a free IP address for the Camera. You can accept the suggested value or enter the value manually. If you enter the value manually, please be aware that the "Subnet Mask" must be the same for both the camera and the PC. Click "OK" to apply the configuration.



13 Or select "DHCP" to obtain an auto IP setting from DHCP server and click "OK" to apply the configuration.



14 Click 'IPCcam Surveillance Software' icon from desktop, quick launch bar, or start menu to start the IP camera surveillance software.

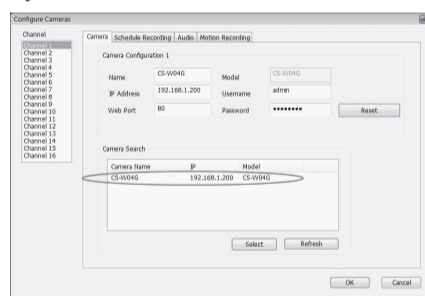


15 Please click 'System configure' button and a popup menu will appear.

- Configure Cameras
- General Options

Please select 'Configure Cameras' to configure cameras.

16 In this table you can configure all cameras you wish to connect. Up to 16 cameras can be connected simultaneously, choose the camera you want to connect on the "Camera Search" list and click "Select" to add it into the channel you want to view, enter the default password "password", then click "ok".



17 The IP Cam Viewer will pop out and the video will show on the channel you choose automatically. Congratulations!! you have settled the



PLANEX COMMUNICATIONS INC.

- PLANEX COMMUNICATIONS is the registered trademark of PLANEX COMMUNICATIONS INC.
- Microsoft and Windows are the registered trademarks or trademarks of Microsoft Corporation in the U.S. and other countries.
- Other company name and product names mentioned in this document may be trademarks or registered trademarks of their respective owners and are hereby acknowledged.
- Note: Before using your PLANEX COMMUNICATIONS product, read the operation manual that came with the product to ensure the correct, safe use of the product.