

PLANEX

BLW-04GM

Quick Installation Guide

802.11b/g Wireless Broadband Router

English Version

PLANEX COMMUNICATIONS INC.

CONTENTS

Chapter 1 Hardware Install	1
Chapter 2 TCP/IP Configure	2
In Windows 95/98/ME	2
In Windows 2000	4
In Windows XP	6
Chapter 3 Verifying your TCP/IP Connection	9
For Windows 95/98/ME	9
For Windows 2000/XP	10
Chapter 4 Configuring the BLW-04GM	11

1

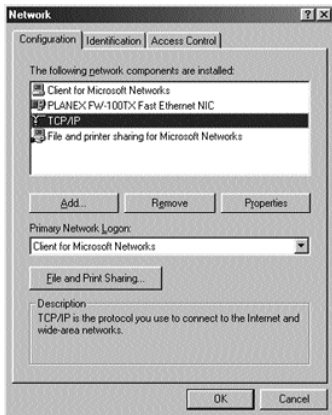
Hardware Install

802.11b/g Wireless Broadband Router

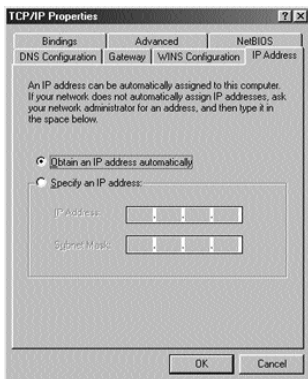
1. Select a suitable place on the network to install the BLW-04GM.
Ensure the BLW-04GM and the DSL/Cable modem are powered Off.
2. Use standard LAN cables to connect PCs to the Switching Hub ports on the BLW-04GM. Both 10BaseT and 100BaseT connections can be used simultaneously.
If required connect any port to a normal port on another Hub, using a standard LAN cable. Any LAN port on the BLW-04GM will automatically function as an "**Uplink**" port when required.
3. Connect the DSL or Cable modem to the WAN port on the BLW-04GM.
Use the cable supplied with your DSL/Cable modem. If no cable was supplied, use a standard cable.
4. Power on the Cable or DSL modem.
Connect the supplied power adapter to the BLW-04GM and power up.
Use only the power adapter provided. Using a different one may cause hardware damage.
5. The Power LED should be ON.
The Status LED should flash, then be turn off. If it stays on, there is a hardware error.
For each LAN (PC) connection, the LAN Link/Act LED should be ON (provided the PC is also ON.)
The WAN LED should be ON.

In Windows 95/98/ME

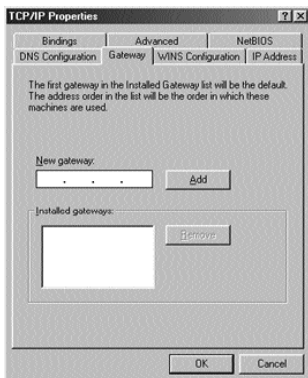
1. From the Windows desktop, click "**Start/Settings/Control Panel.**"
2. Double-click the "**Network**" icon.
3. On the "**Network**" window "**Configuration**" tab, double-click the "**TCP/IP**" entry for your network card.



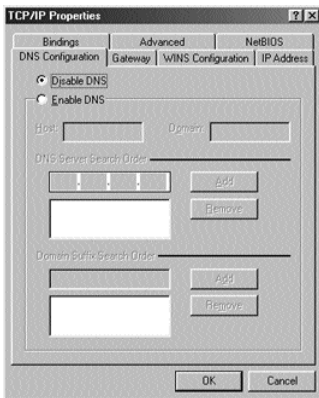
4. Click the "IP Address" tab. If "**Obtain an IP address automatically**" is already checked, your computer is already configured for DHCP.



5. Click the "Gateway" tab and record the numbers listed under "installed gateways."



- Click the "**DNS Configuration**" tab. Record the DNS servers listed under "**DNS Server search Order**." Click "**OK**."



- Windows may need your Windows 95/98/ME CD to copy some files. After it finishes copying, it will then prompt you to restart your system. Click "**Yes**" and the computer will shut down and restart.

In Windows 2000

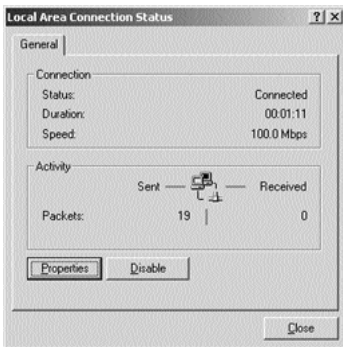
- From the Windows desktop, click "**Start/Settings/Control Panel**."
- Double-click the "**Network and Dial-up Connections**" icon.
- Double-click the icon that corresponds to the connection to your BLW-04GM.

2

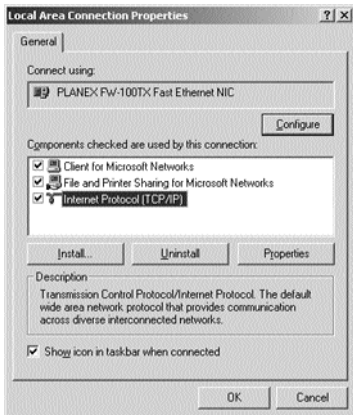
TCP/IP Configure

802.11b/g Wireless Broadband Router

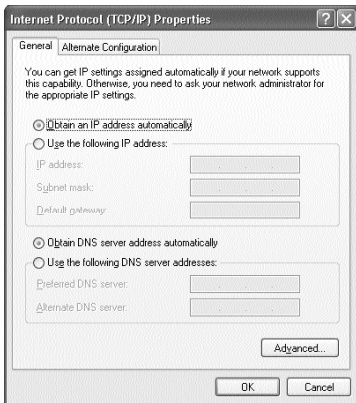
4. Click "properties."



5. Double-click "Internet Protocol (TCP/IP)."



6. Check "**Obtain an IP address automatically**" and check "**Obtain DNS server address automatically**."



7. Click "**OK**." Click "**OK**" or "**Close**" to close each window.

In Windows XP

1. From the Windows desktop, click the "**start**" button Choose "**Control Panel**."
2. Select the "**Network and Internet Connection**" icon, then click the "**Network Connection**" icon.
3. Double click on the "**LAN or High-Speed Internet**."

2

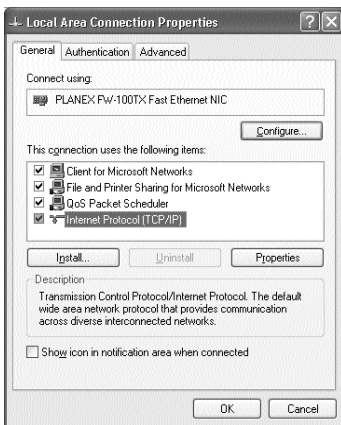
TCP/IP Configure

802.11b/g Wireless Broadband Router

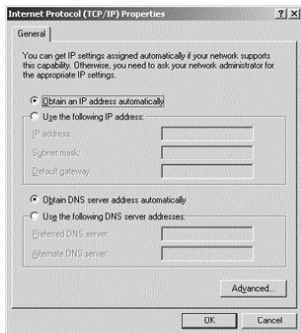
4. Click "Properties."



5. Double-click "Internet Protocol (TCP/IP)."



6. Check "**Obtain an IP address automatically**" and check "**Obtain DNS server address automatically**."



7. Click "**OK**." Click "**OK**" or "**Close**" to close each window.

For Windows 95/98/ME

1. Click the "**start**" button. Choose "**Run...**", then enter the "**winipcfg**" and click "**OK**" button.
2. Your "**IP Configuration**" window should appear.
3. Select the appropriate Network Adapter from the drop-down box.
4. Check whether the "**192.168.1.x**", "**255.255.255.0**" and "**192.168.1.1**" has already been got onto "**IP Address**", "**Subnet Mask**" and "**IP Gateway**". (IP Address is within the range of 192.168.1.2~192.168.1.254.)
 - If yes, go to step 7.
 - If no, go to next step.
5. Click the "**Release**" button, then click "**Renew**" button.
6. The "**IP Address**", "**Subnet Mask**" and "**IP Gateway**" should been got to "**192.168.1.x**", "**255.255.255.0**" and "**192.168.1.1**".
7. Click "**OK**".

For Windows 2000/XP

1. Click the "Start" button. Choose "**Programs\Accessories**", then click "**Command Prompt**".
2. In "**Command Prompt**" window, type the "**ipconfig**" and click **Enter**.
3. Check whether the "**192.168.1.x**", "**255.255.255.0**" and "**192.168.1.1**" has already been got onto "**IP Address**", "**Subnet Mask**" and "**Default Gateway**". (IP Address is within the range of 192.168.1.2~192.168.1.254.)
 - If yes, go to step 7.
 - If no, go to next step.
4. Type the "**ipconfig /release**" and click **Enter**. The IP address will release.
5. Type the "**ipconfig /renew**" and click **Enter**. The IP address will renew.
6. The "**IP Address**", "**Subnet Mask**" and "**Default Gateway**" should been got to "**192.168.1.x**", "**255.255.255.0**" and "**192.168.1.1**".
7. Type the "**exit**" and click **Enter**, will close this window.

There may be something wrong in your installation procedure. Check the following items in sequence:

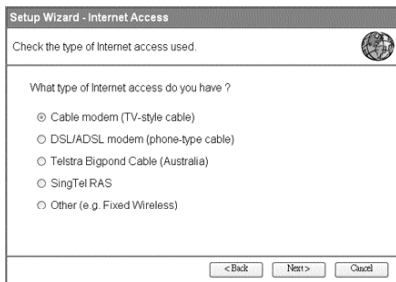
1. Is the Ethernet cable correctly connected between the BLW-04GM and the computer?
The LAN LED on the BLW-04GM and the Link LED of the network card on your computer must be on.
2. Is TCP/IP properly configured on your computer?
If the IP address of the BLW-04GM is 192.168.1.1, the IP address of your PC must be from 192.168.1.2 - 192.168.1.254 and the default gateway must be 192.168.1.1.

Start your WEB browser

1. In the Address box, enter "**HTTP://**" and the IP Address of the BLW-04GM, as in this example, which uses the BLW-04GM's default IP Address:HTTP://192.168.1.1
2. Ignore the user's name field. Then key in password is "**0000**".
3. Click "**Internet Connection Wizard**" then Click "**Next**".
4. After steps of configure depends on your ISP.

For Cable Modem

1. Choose "**Cable modem (TV-style cable)**" then click "**Next**".



2. This page can be set "**Host Name**", "**Domain Name**", "**MAC address**" and "**Login method**". Use the default values if your ISP did not provide this data. Click "**Next**" to continue.

4

Configuring the BLW-04GM

802.11b/g Wireless Broadband Router

3. Choose "**IP address is assigned automatically**" then click "**Next**".

The screenshot shows a window titled "Setup Wizard - IP Address". The main text says "Check the data supplied by your ISP." Below this, it asks "What type of IP Address was assigned by your ISP?". There are three radio button options: "IP Address is assigned automatically (Dynamic IP Address)", "Specified IP Address (Static IP Address)", and "DNS: Automatic (obtain from server)". The "Automatic" option is selected. Under "DNS: Automatic", there is a "Fixed:" label followed by four empty input boxes. At the bottom right, there are three buttons: "< Back", "Next >", and "Cancel".

4. Click "**Finish**" button will save data and commencing test.

For ADSL (Static IP)

1. Choose "**DSL/ADSL modem (phone-type cable)**" then click "**Next**".

The screenshot shows a window titled "Setup Wizard - Internet Access". The main text says "Check the type of Internet access used." Below this, it asks "What type of Internet access do you have?". There are five radio button options: "Cable modem (TV-style cable)", "DSL/ADSL modem (phone-type cable)", "Telstra Bigpond Cable (Australia)", "SingTel RAS", and "Other (e.g. Fixed Wireless)". The "DSL/ADSL modem" option is selected. At the bottom right, there are three buttons: "< Back", "Next >", and "Cancel".

4

Configuring the BLW-04GM

802.11b/g Wireless Broadband Router

2. Choose "**DSL/ADSL modem (phone-type cable)**" then click "Next".
3. Choose "**Specified IP address**" then type data provide by the ISP. Click "Next" to continue.

Setup Wizard - IP Address

Check the data supplied by your ISP.

What type of IP Address was assigned by your ISP?

IP Address is assigned automatically (Dynamic IP Address)

Specified IP Address (Static IP Address)

IP Address:

Subnet Mask:

Gateway:

DNS: Automatic (obtain from server)

Fixed:

< Back Next > Cancel

4. Click "**Finish**" button will save data and commencing test.

For PPPoE

1. Choose "**DSL/ADSL modem (phone-type cable)**" then click "Next".

Setup Wizard - Internet Access

Check the type of Internet access used.

What type of Internet access do you have ?

Cable modem (TV-style cable)

DSL/ADSL modem (phone-type cable)

Telstra Bigpond Cable (Australia)

SingTel RAS

Other (e.g. Fixed Wireless)

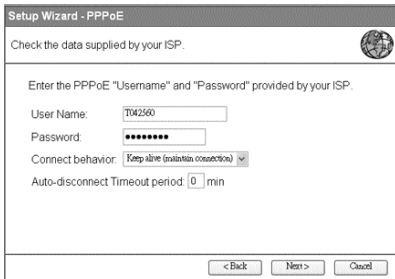
< Back Next > Cancel

4

Configuring the BLW-04GM

802.11b/g Wireless Broadband Router

2. Choose "**PPPoE**" then click "**Next**".
3. Enter the PPPoE "**Username**" and "**Password**" provide by your ISP.
Click "**Next**" to continue.



Setup Wizard - PPPoE

Check the data supplied by your ISP.

Enter the PPPoE "Username" and "Password" provided by your ISP.

User Name:

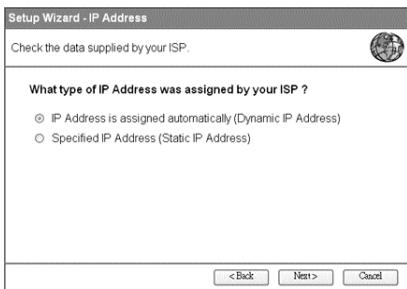
Password:

Connect behavior:

Auto-disconnect Timeout period: min

< Back Next > Cancel

4. Choose "**IP address is assigned automatically**" then click "**Next**".



Setup Wizard - IP Address

Check the data supplied by your ISP.

What type of IP Address was assigned by your ISP ?

IP Address is assigned automatically (Dynamic IP Address)

Specified IP Address (Static IP Address)

< Back Next > Cancel

5. Click "**Finish**" button will save data and commencing test.

4

Configuring the BLW-04GM

802.11b/g Wireless Broadband Router

For PPPoE (Static IP)

1. Choose "**DSL/ADSL modem (phone-type cable)**" then click "Next".

Setup Wizard - Internet Access

Check the type of Internet access used.

What type of Internet access do you have ?

Cable modem (TV-style cable)

DSL/ADSL modem (phone-type cable)

Telstra Bigpond Cable (Australia)

SingTel RAS

Other (e.g. Fixed Wireless)

< Back Next > Cancel

2. Choose "**PPPoE**" then click "Next".
3. Enter the PPPoE "**Username**" and "**Password**" provided by your ISP. Click "Next" to continue.

Setup Wizard - PPPoE

Check the data supplied by your ISP.

Enter the PPPoE "Username" and "Password" provided by your ISP.

User Name:

Password:

Connect behavior: ▾

Auto-disconnect Timeout period: min

< Back Next > Cancel

4

Configuring the BLW-04GM

802.11b/g Wireless Broadband Router

4. Choose "**Specified IP Address**" then type data provide by the ISE. Click "**Next**" to continue.

Setup Wizard - IP Address

Check the data supplied by your ISP.

What type of IP Address was assigned by your ISP?

IP Address is assigned automatically (Dynamic IP Address)

Specified IP Address (Static IP Address)

IP Address:

Subnet Mask:

Gateway:

DNS: Automatic (obtain from server)

Fixed:

< Back Next > Cancel

5. Click "**Finish**" button will save data and commencing test.

<http://www.planex.net>
<http://www.planex.com.tw>