

Configuration of X-Link and PSP

GW-US54GZL/GW-US54GXS/GW-US54Pro
Chinese & English Ver.: 1.2

<http://www.planex.net>
PLANEX COMMUNICATIONS INC.

Notice

This configuration is for
GW-US54GZL, GW-US54GXS, GW-US54Pro users.

Step 1

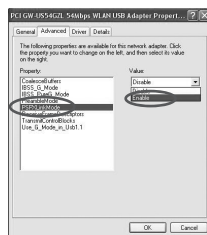
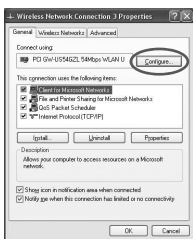
Download X-Link Kai

1. Download the X-Link Kai software and register an account from <http://www.teamxlink.co.uk>, please visit the website for detail.
2. Install X-Link Kai Software

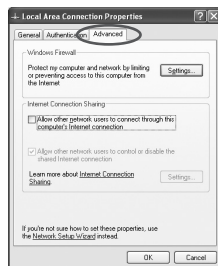
Step 2

Configure the detail setting of GW-US54GZL / GW-US54GXS / GW-US54Pro

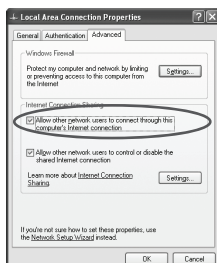
1. Open to Property of Wireless Network Connection.
2. Click on **Configure**. Select **PSPXLinkMode** and choose X-Link function to **Enable**.



3. Click on **OK**.
4. Open to Property of Area Network Connection.
5. Click **Advanced** tab.



6. Choose **Allow other network users to connect through this computer's internet connection** to make a check mark.



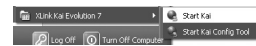
7. Click on **OK**.

8. Reboot the computer.

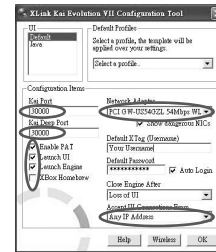
Step 3

Configure the X-Link Kai

1. Execute Start Kai Config Tool.



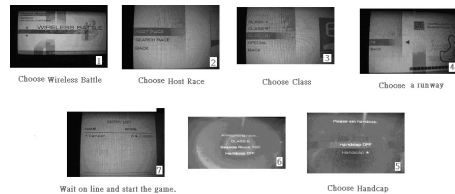
2. Please refer to the below setting. (Default X Tag is for registered login name and default password is for registered account password.)



Step 4

Configure PSP

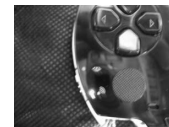
1. Turn on the wireless, and enter the PSP game.
2. We use Ridge Racer English version for example, please follow the procedure as picture shown as below.



Step 5

Configure Utility of Wireless adopter

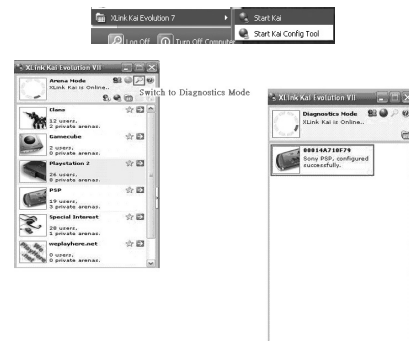
1. Execute utility of wireless adopter, search PSP signal and then connect to it.
2. When both Wireless adopter and PSP connected, PSP wireless LED will be evasive steady.



Step 6

Execute X-Link

1. Execute the **Start Kai** and click on **Switch to Diagnostics Mode**.



2. If PSP is already detected by Kai, and console is shown as left picture. (if not, please wait for few minutes)
3. Then ready to play and enjoy games.

