

Quick Installation Guide

2.4 GHz IEEE 802.11g 54Mbps Wireless LAN 2-WAY Access Point

GW-AP54SP
English Version: 1.0

www.planex.net
PLANEX COMMUNICATIONS INC.

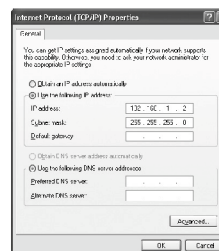
WARNING

Do not use a power AC adapter other than the one supplied with the product.

Chapter 3 Login to GW-AP54SP

Fixed IP Addresses Configuration for Management PC

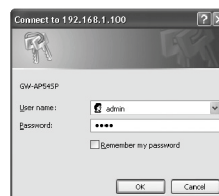
- For Windows 98SE/ME
 1. Click **Start/Settings/Control Panel**.
 2. Double-click the **Network** icon. Highlight the TCP/IP line that has been assigned to your network card on the **Configuration** tab of the **Network** window.
 3. Click the **Properties** button.
 4. Select **Specify an IP address** and enter **192.168.1.***** in the **IP address** location (where *** is a number between 1 and 254 without 100), and the default **Subnet mask: 255.255.255.0**. Note that no two computers on the same LAN can have the same IP address.
- For Windows 2000
 1. Click the **Start** button and choose **Settings**, then click **Control Panel**.
 2. Double click the **Network and Dial-up Connections** icon, then **Local Area Connection** icon, and press the **Properties** button in the **General** tab.
 3. Select the TCP/IP line that has been assigned to your network card in the **Local Area Connection Properties** window.
 4. Click the **Properties** button to set the TCP/IP protocol for the management PC.
 5. Select **Use the following IP address** and enter **192.168.1.***** in the **IP address** location (where *** is a number between 1 and 254 without 100), and the default **Subnet mask: 255.255.255.0**. Note that no two computers on the same LAN can have the same IP address.
- For Windows XP
 1. Click the **start** button and choose **Control Panel**.
 2. Select the **Network and Internet Connections** icon, then click the **Network Connections** icon, and double click on the **LAN or High-Speed Internet**.
 3. Press the **Properties** button in the **General** tab.
 4. Select the TCP/IP line that has been assigned to your network card in the **Local Area Connection Properties** window.
 5. Click the **Properties** button to set the TCP/IP protocol for the management PC.
 6. Select **Use the following IP address** and enter **192.168.1.***** in the **IP address** location (where *** is a number between 1 and 254 without 100), and the default **Subnet mask: 255.255.255.0**. Note that no two computers on the same LAN can have the same IP address.



Browser Configuration

Your GW-AP54SP is designed to use a Web-based User Interface for configuration. Open your web browser and type **http://192.168.1.100** in the browser's address box. This address is the factory set IP Address of your GW-AP54SP. Press **Enter**.

The login screen **Connect to 192.168.1.100** will appear. Type the **admin** (default user name) in the User name field. Type the **0000** (default password) in the Password field. Click **OK**.

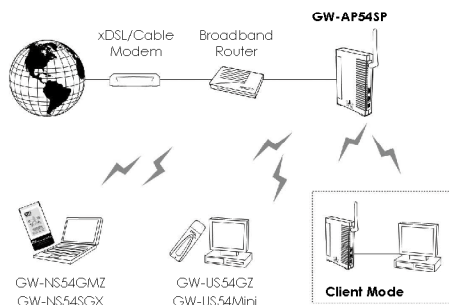


For details on how to use this AP, please read the User's Manual

Chapter 1 Introduction

Overview

The 2.4 GHz IEEE 802.11g 54Mbps Wireless LAN Access Point (GW-AP54SP) offers fast, reliable wireless connectivity with considerable cost savings over wired LANs (eliminates long-term maintenance overhead for cabling). Just install enough wireless access points to cover your network area, plug wireless cards into your notebooks or install wireless adapters into your desktops, and start networking. Moreover, moving or expanding your network is as easy as moving or installing additional access points—no wires!



Package Contents

The following items should be included:

- GW-AP54SP
- Quick Installation Guide
- CD-ROM (User's Manual)
- Power Adapter
- Antenna (2dBi)
- RJ-45 UTP Cable
- Warranty Card

* If any of the above items are damaged or missing, please contact your dealer immediately.

Chapter 2 Hardware Installation

1. Select the Site – Choose a location for your Wireless Access Point. Usually, the best location is at the center of your wireless coverage area, if possible within line-of-sight of all wireless devices.
2. Place the Wireless Access Point in a position that gives it maximum coverage. Normally, the higher you place the antenna, the better the performance.
3. Position the antennas in the desired positions.
4. Connect the Ethernet cable – The GW-AP54SP can be wired to an Ethernet network through an Ethernet device such as a hub or a switch using UTP Ethernet cable and an RJ-45 connector. Use either straight through or crossover cabling depending on the port type provided by the Ethernet device.
5. Connect the power cable – Connect the power adapter cable to the 12V DC power socket on the rear panel.

