

**PLANEX**

2.4GHz IEEE 802.11g 54Mbps Wireless LAN  
PCIbus Adapter

**GW-DS54GT**

Quick Installation Guide

English version

**PLANEX COMMUNICATIONS INC.**

# CONTENTS

---

Chapter 1 Installation .....	1
Chapter 2 Package Contents .....	2
Chapter 3 Installation Guide.....	3

# 1

## Introduction

### 2.4GHz IEEE 802.11g 54Mbps Wireless LAN PCIbus Adapter

The GW-NS54GT is a standard PCIbus adapter for 2.4GHz IEEE 802.11g 54Mbps wireless LAN. This product is fully compatible with all the 2.4GHz IEEE 802.11b 11Mbps devices.

## 2

### Package Contents

2.4GHz IEEE 802.11g 54Mbps Wireless LAN PCibus Adapter

Please contact your local dealer if any of the listed items appears to be damaged or missing.

One GW-DS54GT

One CD-ROM (Driver / Utility and Manual)

One Quick Installation Guide

One Warranty Card

### 2.4GHz IEEE 802.11g 54Mbps Wireless LAN PCibus Adapter

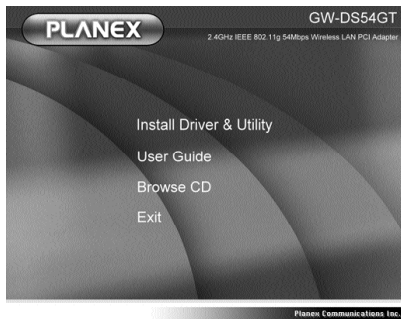
To complete the installation of GW-DS54GT consists of the following procedures.

**Caution:**

Do not insert the device into your computer until completing the procedure of "Driver & Utility Installation" has been performed.

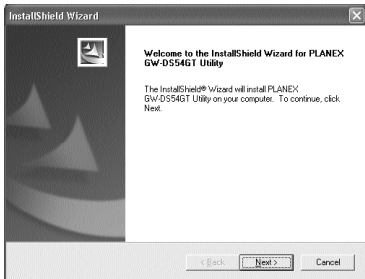
### 3.1 Driver & Utility Installation

1. Exit all Windows programs. Insert the CD-ROM into the CD-ROM drive of your computer.
2. The main screen of the CD-ROM opens. Click Install Driver & Utility to start the installation.

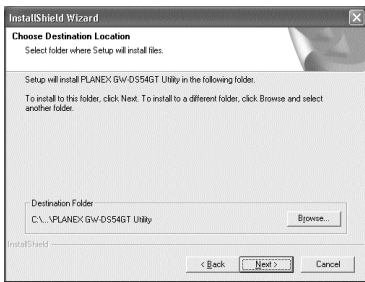


## 2.4GHz IEEE 802.11g 54Mbps Wireless LAN PCibus Adapter

3. When the "**InstallShield Wizard**" screen appears, click "**Next**" to continue.



4. The "**Choose Destination Location**" screen will show you the default destination chosen by the utility. Click "**Next**" to continue.

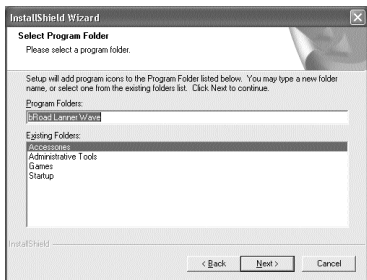


# 3

## Installation Guide

### 2.4GHz IEEE 802.11g 54Mbps Wireless LAN PCibus Adapter

5. Follow the instruction to select the program folder. Click "Next" to continue.



6. Click "OK" to complete the Installation.



### 3.2 Device Installation

**Note:**

Make sure the procedure in "**Driver & Utility Installation**" has been performed.

1. Before installing the device, make sure the computer is turned off. Remove the expansion slot cover from the computer.
2. Carefully slide the GW-DS54GT into the PCI slot of your computer. Push evenly and slowly and ensure it is properly seated. You may have to use the mounting screw to have the card screwed securely in place.
3. After the device has been connected to your computer, turn on your computer. Windows will detect the new hardware and then automatically copy all of the files needed for networking.

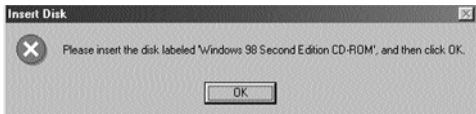
# 3

## Installation Guide

### 2.4GHz IEEE 802.11g 54Mbps Wireless LAN PCibus Adapter

#### 3.2.1 Notes for Windows 98 Users

Please make sure you have the operating system CD-ROM ready before installation of the device. You may be asked to insert the CD-ROM in order to locate specific drivers.



#### 3.2.2 Notes for Windows 2000 Users

During the installation, when the "Digital Signature Not Found" screen appears, click "Yes" to continue.



# 3

## Installation Guide

2.4GHz IEEE 802.11g 54Mbps Wireless LAN PCibus Adapter

### 3.2.3 Notes for Windows XP Users

1. Select "**Install the software automatically (Recommended)**" and "Next".



2. Click "**Continue Anyway**"



# 3

## Installation Guide

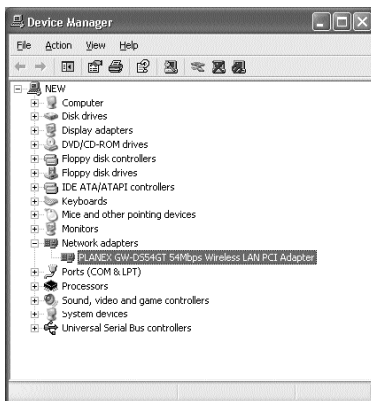
2.4GHz IEEE 802.11g 54Mbps Wireless LAN PCIbus Adapter

3. Click "Finish" to complete the installation.



### 3.2.4 Device Installation Verification

To verify that the device has been properly installed in your desktop computer and is enabled, go to "Start" "Settings" "Control Panel" "System" "Hardware" "Device Manager". Select the "Network adapters" item. If the **PLANEX GW-DS54GT 54Mbps Wireless LAN PCI Adapter** is listed, it means that your device is properly installed and enabled successfully.



<http://www.planex.net>  
<http://www.planex.com.tw>