

# **GW-NS11X**

## Quick Installation Guide

11Mbps Wireless LAN Card

English & Chinese version

# CONTENTS

---

Chapter 1	Network Configuration .....	1
Chapter 2	Package Contents .....	2
Chapter 3	Set up GW-NS11X for Windows 98/ 98SE/ME .....	3
Chapter 4	Set up GW-NS11X for Windows 98/ ME .....	4
Chapter 5	Set up GW-NS11X for Windows 2000 .....	5
Chapter 6	Set up GW-NS11X for Windows XP .....	6
Chapter 7	Configuring the WLAN Card .....	12
Chapter 8	Quick Tips to Configure the GW-NS11X .....	18

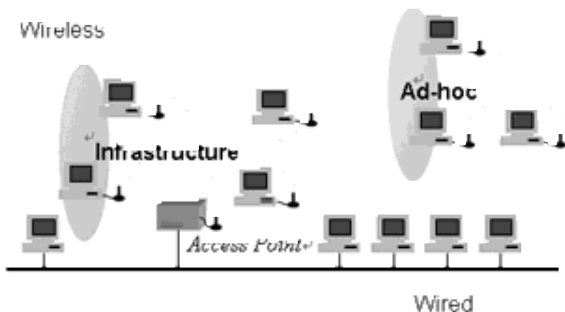
# 1

## Network Configuration

### 11Mbps Wireless LAN Card

GW-NS11X is an IEEE802.11/802.11b-compliant DSSS wireless LAN PC card. It fully supports wireless networking under Windows 98/98SE/ME/2000/XP.

GW-NS11X can be operated in Ad-Hoc or Infrastructure network configurations. Ad-Hoc mode allows GW-NS11X users to join a Basic Service Set (peer-to-peer mode, without access point). Infrastructure mode allows GW-NS11X users to join an Extended Basic Service Set (connect to an Access Point)



## 2

### Package Contents

11Mbps Wireless LAN Card

GW-NS11X comes with the following items. Please go through each item below. If any of listed items appears to be damaged or missing, please contact your local dealer.

One GW-NS11X

One CD-ROM (GW-NS11X Driver and Utility Software)

One User's Manual Installation Guide

### 3

## Set up GW-NS11X for Windows 98

### 11Mbps Wireless LAN Card

Step 1 After inserting the GW-NS11X into the CardBus slot on your computer, Windows will auto-detect new hardware and will display an "Add New Hardware Wizard" window. Click **Next** to continue.

Step 2: Select "Search for the best driver for your device (Recommended)" and click **Next** to proceed.

Step 3: Insert the Product CD-ROM into the CD-ROM drive. Select **Specify a location** and click **Browse** to provide the appropriate path (e.g. E:\Win98). Click **Next**.

Step 4: The Windows will find "**PLANEX GW-NS11X 11Mbps Wireless LAN Card**". Click **Next** to continue.

Step 5: Once the [Please insert the disk labeled "**Windows 98 CD-ROM**"], and then click **OK** window appears, enter the path corresponding to the appropriate drives and click **OK**. Usually these files can be found at C:\Windows or C:\Windows\system.

Step 6: Click **Finish** to complete the software installation.

Step 7: Restart the computer.

Step 8 Open Control Panel/System/Device Manager, and check Network Adapters to see if any error icon appears next to the PLANEX GW-NS11X 11Mbps Wireless LAN Card. If no, your GW-NS11X is working well.

**11Mbps Wireless LAN Card**

Step 1 After inserting the GW-NS11X into the CardBus slot on your computer, Windows will auto-detect new hardware and will display an “**Add New Hardware Wizard**” window. Click **Next** to continue.

Step 2: Select “ Search for the best driver for your device (Recommended) ” and click **Next** to proceed.

Step 3: Insert the Product CD-ROM into the CD-ROM drive. Select the “**CD-ROM drive**” check box and click on **Next** to install the driver

Step 4: The Windows will find “**PLANEX GW-NS11X 11Mbps Wireless LAN Card**” . Click **Next** to continue.

Step 5: Once the [Please insert the disk labeled “**Windows 98/ME CD-ROM**”], and then click **OK** window appears, enter the path corresponding to the appropriate drives and click **OK**. Usually these files can be found at C:\Windows or C:\Windows\system.

Step 6: Click **Finish** to complete the software installation.

Step 7: Restart the computer.

Step 8: Open Control Panel/System/Device Manager, and check Network Adapters to see if any error icon appears next to the PLANEX GW-NS11X 11Mbps Wireless LAN Card. If no, your GW-NS11X is working well.

**5****Set up GW-NS11X for Windows 2000****11Mbps Wireless LAN Card**

Step 1 After inserting the GW-NS11X into the CardBus slot on your computer, Windows will auto-detect the GW-NS11X.

Step 2: A "**Found New Hardware Wizard**" window shows up. Click **Next** to proceed.

Step 3 Select "**Search for a suitable driver for my device (recommended)**".

Step 4 Insert the Product CD-ROM into the CD-ROM drive. Specify the location where the driver is placed. Click on **Next** to install the driver.

Step 5: The windows will find "GW-NS11X". Click on **Next** to continue.

Step 6: Click on **Yes** to continue.

Step 7: Click **Finish** to complete the installation.

Step 8: Open **Control Panel/System/Device Manager**, and check **Network Adapters** to see if any error icon appears. If no, your GW-NS11X is working well.

# 6

## Set up GW-NS11X for Windows XP

### 11Mbps Wireless LAN Card

**Step 1** After inserting the GW-NS11X into the CardBus slot on your notebook, the Windows will auto-detect the GW-NS11X and a "Found New Hardware Wizard" window will show up. Select "Install from a list or specific (Advanced)" to install the driver.

**Step 2** Insert the Product CD-ROM into the CD-ROM drive. Check the "Search removable media (floppy, CD-ROM...)" check box and click on Next to install the driver.

**Step 3** The windows will find "PLANEX GW-NS11X 11Mbps Wireless LAN Card" and start copying corresponding files into the system. Click on Continue Anyway to continue.

**Step 4:** Click Finish to complete the installation.

**Step 5:** Right click "My Computer" from Start, select Properties, go to the Hardware tab and click the Device Manager button to see if any error icon appears next to the Network Adapter/GW-NS11X. If no, your GW-NS11X is working well.

**Step 6** After installing the GW-NS11X, the Windows XP will display a "Wireless Network Connection # " message.



## 6

## Set up GW-NS11X for Windows XP

## 11Mbps Wireless LAN Card

Click on the message and the "Automatic Wireless Network Configuration" will then appear automatically and allow use to choose to connect a wireless infrastructure network (Access Point), shown as the below figure. You may click the Advanced button to make advanced configuration for the Wireless LAN Card, shown as below.

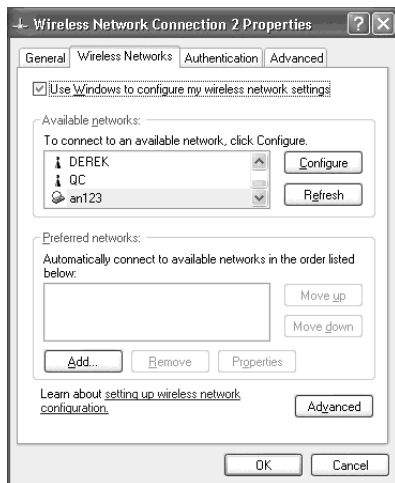


## 6

**Set up GW-NS11X for Windows XP**

## 11Mbps Wireless LAN Card

For more information on using the automatic wireless network configuration please refer to Windows XP Help file.



## 11Mbps Wireless LAN Card

However, the GW-NS11X Utility, which comes with the GW-NS11X, provides you more tools to configure the GW-NS11X and monitor the wireless connection. For more information on installing and using the GW-NS11X utility.

**Note:** To use the GW-NS11X utility under Windows XP, you need to disable the **Automatic Wireless Network Configuration** first. Steps are described as follows:

Right click the **Network Connections icon**. Select Properties.

Go to the Wireless Networks tab.

Uncheck the "**Use Windows to configure my wireless network settings**" check box and click the **OK** button (see the above picture).

**You install the GW- NS11X through to drive the program behind, the system will install the GW- NS11X automatically the Utility if system did not install that Utility invite you to carry on to install the program of the tool of the GW- NS11X according to following step.**

Step 1:Execute WLSetup.exe in your CD-ROM drive.

Step 2:The following screen appears.

Step 3:Click Next to continue.

Step 4 Select the default path for the wireless utility or browse to an alternate path Then.

Step 5:Click Next. The following screen appears:

Step 6:Type in a Program Folder name or select the default name and click Next. Setup installs the software and the following screen appears.

Step 7:Click Next to continue.

Step 8:Click Finish to restart your computer.

# 6

## Set up GW-NS11X for Windows XP

### 11Mbps Wireless LAN Card

After you have installed the utility and have restarted your computer, you will see the GW-NS11X icon in the Windows taskbar:



#### Wireless Utility Icon

Green: indicates a connection is linked to a wireless network.



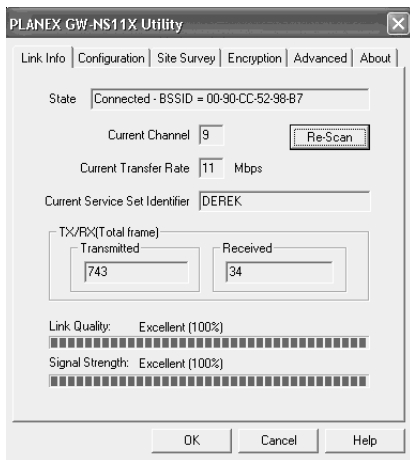
Red: indicates that the wireless LAN card is looking for an available access point.



## 11Mbps Wireless LAN Card

## STEP 1: Link Info

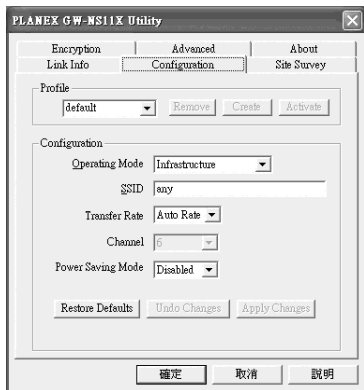
The **Link Info** screen shows you the status of your current connection. **Click** Re-Scan to search for wireless connection (the Card will search for the connection automatically when it is activated).



## STEP 2: Configuration

Select the "**Configuration**" tab. The **profile** setting allows you to save configurations in different profiles for different working environments. The default profile will contain the initial configuration setting when you install the Card. Under the **Operating Mode** drop-box, you may choose either **Infrastructure** or **Ad-Hoc**. The Infrastructure mode allows a wireless card to communicate with a wired network employing an Access Point, while the Ad-Hoc mode allows wireless-to-wireless, peer-to-peer communication. If you choose Infrastructure, the **SSID** should have the same name as the Access Point. Under **Power Saving Mode**, you can select **Enabled** to allow your adapter to go to sleep mode while the Card doesn't proceed the data transmission. Or select **Disabled** to make the Card never go to sleep mode.

If you choose **Ad-Hoc**, all clients should share the same **SSID** name and should use the same channel. Click **Apply** to save the settings.



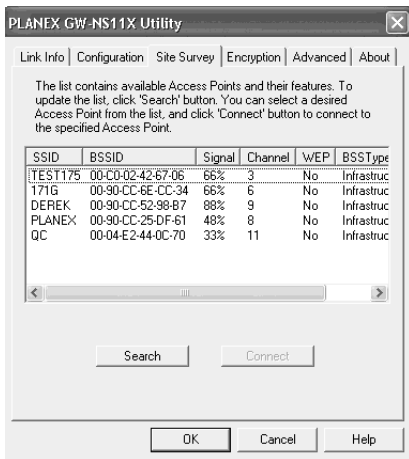
## 7

**Configuring the WLAN Card**

## 11Mbps Wireless LAN Card

## STEP 3: Site Survey

Select the "Site Survey" tab. The list on the adjacent screen shows you available Access Points and their features. Click on the desired Access Point, then click **Connect** to connect or **Search** to search for more Access Points. Click **OK** when you are finished.



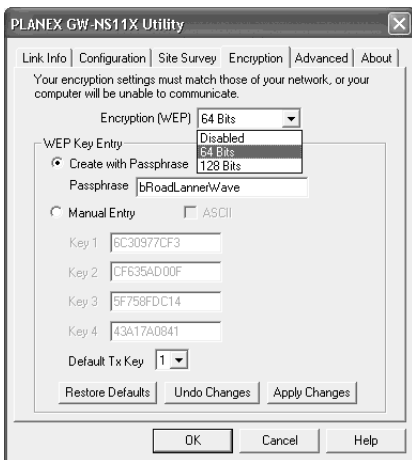
## 7

**Configuring the WLAN Card**

## 11Mbps Wireless LAN Card

## STEP 4:Encryption

Click on the "**Encryption**" tab. Under the drop-box, you can choose to have WEP encryption on **Disabled**, **64-Bit**, or **128-Bit**. Wired Equivalent Privacy (WEP) is an encryption scheme used to protect wireless data communication. The Disabled setting prevents the sharing of data with other computers on the WEP network. For data sharing to be enabled, select the level of encryption desired, either 64 or 128-bit.



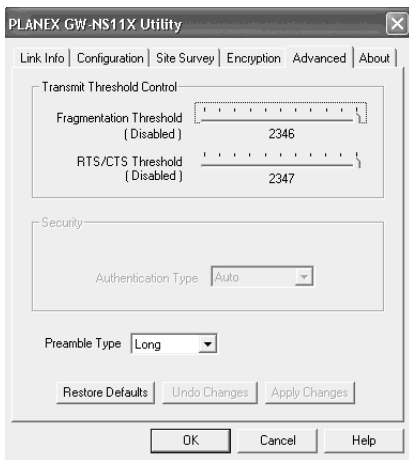
## 7

**Configuring the WLAN Card**

## 11Mbps Wireless LAN Card

## STEP 5:Advanced

The Wireless network tool program under some environments of the network also provides the GW- NS11X enter the enactment of the rank, this enter the options of the rank the containment the RTS/ CTS and Fragmentation the Threshold.



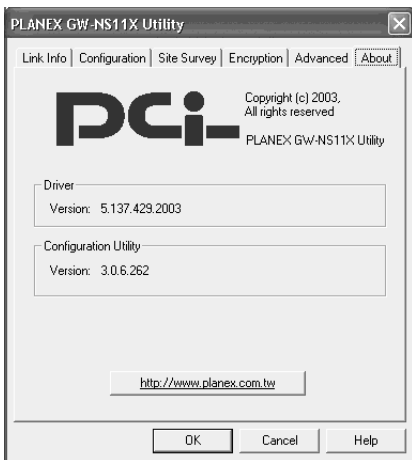
## 7

**Configuring the WLAN Card**

## 11Mbps Wireless LAN Card

## STEP 6: About

The "About" tab shows you copyright and version information about the driver, the configuration utility, and the firmware. Click **OK** to complete the configuration.



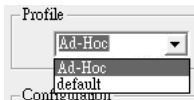
## 11Mbps Wireless LAN Card

This features the guidebook of the beginning included the demand uses basic characteristic of the GW- NS11X , coming after the step of the following to the set the network sets up.



**Set the Profile (can skip)**

The **Profile** field allows you to set values for all parameters by selecting a previously defined profile. To create the profile, go to the **Profile** field, type a profile name and set the corresponding parameters. After changing parameters, save the profile and click the **Apply** button to take effect. You can have multiple profiles and modify the profile at any time.



### Set the Operation Mode

GW- NS11X contain two kinds of types of the on-line of network, if you need to access to intranet or via Access Point connect to internet, please choose the mode of the " Infrastructure ". If is an enactment to become the lead-in flock the computer in the set wants to use the file and prints out the sharing ( under the situation of having no AP), please choose the mode of the " Ad- Hoc" **If the mode of the Ad- Hoc of the choice must flock the computer in the set up the same SS ID.**

Operating Mode	Infrastructure
SSID	Ad-Hoc
	Infrastructure

**Set the SSID**

The SSID is the unique ID used by Access Points and stations to identify a wireless LAN. Wireless clients associating to any Access Point must have the same SSID. The default setting is ANY, which allows your GW-NS11X to automatically associate to any Access Point (Infrastructure mode) in the vicinity of your wireless adapter. you can assign any character to **SSID** field. It will then attempt to associate with Access Points or stations with the same ESS ID. The SS ID can be set up to 32 characters and is case sensitive.

SSID	any
------	-----

### Set the Encryption

To prevent unauthorized wireless stations from accessing data transmitted over the network, the Wireless LAN Card offers highly secure data encryption, known as WEP (Wired Equivalent Privacy). The Encryption tab allows you enable encryption and set the encryption keys, making your data transmission over the air more secure. You can select **enable** or **disable** WEP function. Will appear set field of the Encryption later on, use the way as follows.

### Create Encryption Keys Manually

You can also create up to 4 encryption keys manually by clicking the Create Keys Manually check box.

For 64bit encryption you may choose:

**Alphanumeric: 5 characters** (case sensitive) ranging from "a-z", "A-Z" and "0-9" (e.g. MyKey)

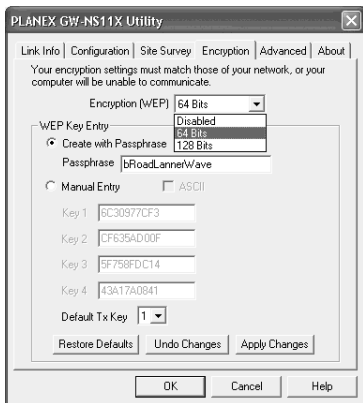
**Hexadecimal: 10 hexadecimal digits** in the range of "A-F", "a-f" and "0-9" (e.g. 11AA22BB33)

For 128bit encryption you may choose:

**Alphanumeric: 13 characters** (case sensitive) ranging from "a-z", "A-Z" and "0-9" (e.g. MyKey12345678)

**Hexadecimal: 26 hexadecimal digits** in the range of "A-F", "a-f" and "0-9" (e.g. 00112233445566778899AABBCC).

After entering the WEP keys in the key field, select one key as active key, click the **OK** button and then click the **Apply** button to make setting take effect.



### Create Encryption Keys by Using a Passphrase

To create encryption keys by using a passphrase, click the **Create Key with Passphrase** check box and type a character string in the **Passphrase** field. As you type, the utility uses an algorithm to generate 4 keys automatically. Select either the **64bit** or **128bit** encryption first and type a string in the **Create Key with Passphrase** field. Select one key from the 4 WEP keys and click OK. Then click the **Apply** button on the **Configuration** tab to make the setting take effect.

### Warning :

When **Create Key with Passphrase** is enabled, the Access Points you use must need to support Passphrase as well so that the communication can be established.

WEP Key Entry

Create with Passphrase

Passphrase

Manual Entry  ASCII

Key 1

Key 2

Key 3

Key 4

Default Tx Key

**Support of the technique**

The Firmware of the GW- NS11X the edition of the body is in the Windows of About to show at the program of the tool, the user can carry latest edition of the software from the top and bottom of the website or obtain latest information of the software from the dealer. if you have the usage or install difficult problem of the GW- NS11X, please contact us.

**8****Quick Tips to Configure the GW-NS11X**

11Mbps Wireless LAN Card

<http://www.planex.net>  
<http://www.planex.com.tw>