



**GW-US11H**  
**Quick Install**

11Mbps Wireless LAN USB Card

English Version

# CONTENTS

---

---

1. Network Configuration .....	1
2. Package Contents .....	2
3. Installation of the GW-US11H under Windows 98/ME .....	3
4. Installation of the GW-US11H under Windows 2000 .....	4
5. Installation of the GW-US11H under Windows XP .....	5
Installation of the Wireless LAN Utility .....	7
Usage of the Wireless LAN Utility .....	7
6. Quick Tips to Configure the GW-US11H .....	11
7. Technical Support .....	16

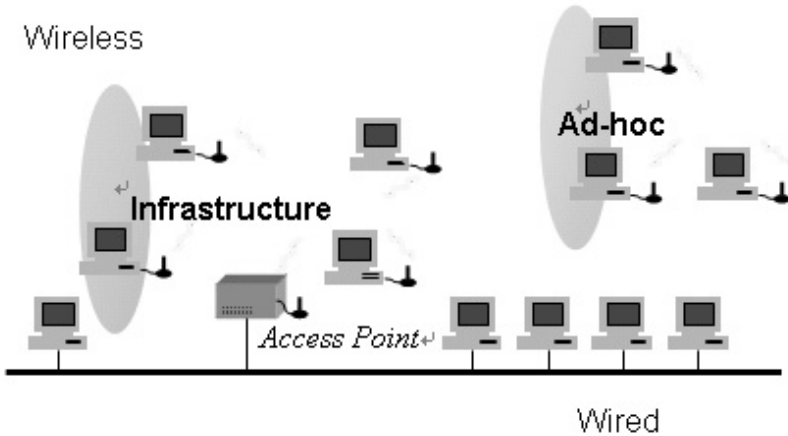
# 1

## Network Configuration

### 11Mbps Wireless LAN USB Card

GW-US11H is an IEEE802.11/802.11b-compliant DSSS wireless LAN USB card. It fully supports wireless networking under Windows 98SE/ME/2000/XP.

GW-US11H can be operated in Ad-Hoc or Infrastructure network configurations. Ad-Hoc mode allows GW-US11H users to join a Basic Service Set (i.e., peer-to-peer mode, without access point). Infrastructure mode allows GW-US11H users to join an Extended Basic Service Set (i.e., connect to an Access Point)



# 2

## Package Contents

### 11Mbps Wireless LAN USB Card

GW-US11H comes with the following items. Please go through each item below. If any of listed items appears to be damaged or missing, please contact your local dealer.

- One GW-US11H
- One MiniUSB Cable
- One CD-ROM (GW-US11H Driver and Utility Software)
- One User's Manual Installation Guide

# 3

## Installation of the GW-US11H under Windows 98/ME

### 11Mbps Wireless LAN USB Card

- Step 1:** After inserting the GW-US11H into the USB slot on your computer, Windows will auto-detect new hardware and will display an "**Add New Hardware Wizard**" window. Click **Next** to continue.
- Step 2:** Select "**Search for the best driver for your device (Recommended)**" and click **Next** to proceed.
- Step 3:** Insert the Product CD-ROM into the CD-ROM drive. Select the "**CD-ROM drive**" check box and click on **Next** to install the driver.
- Step 4:** The Windows will find "**GW-US11H**". Click **Next** to continue.
- Step 5:** Once the [Please insert the disk labeled "**Windows 98/ME CD-ROM**", and then click OK] window appears, enter the path corresponding to the appropriate drives and click **OK**. Usually these files can be found at C:Windows or C:Windows\system.
- Step 6:** Click **Finish** to complete the software installation.
- Step 7:** Restart the computer.

# 4

## Installation of the GW-US11H under Windows 2000

### 11Mbps Wireless LAN USB Card

**Step 1:** After inserting the GW-US11H into the USB slot on your computer, Windows will auto-detect the GW-US11H.

**Step 2:** A "Found New Hardware Wizard" window shows up. Click **Next** to proceed.

**Step 3:** Select "**Search for a suitable driver for my device (recommended)**".

**Step 4:** Insert the Product CD-ROM into the CD-ROM drive. Specify the location where the driver is placed. Click on **Next** to install the driver.

**Step 5:** The windows will find "**USB Device**". Click on **Next** to continue.

**Step 6:** Click on **Yes** to continue

**Step 7:** Click **Finish** to complete the installation.

# 5

## Installation of the GW-US11H under Windows XP

### 11Mbps Wireless LAN USB Card

- Step 1:** After inserting the GW-US11H into the USB slot on your notebook, the Windows will auto-detect the GW-US11H and a "**Found New Hardware Wizard**" window will show up. Select "**Install from a list or specific (Advanced)**" to install the driver.
- Step 2:** Insert the Product CD-ROM into the CD-ROM drive. Check the "**Search removable media (floppy, CD-ROM...)**" check box and click on **Next** to install the driver.
- Step 3:** The windows will find "**GW-US11H**" and start copying corresponding files into the system. Click on **Continue Anyway** to continue.
- Step 4:** Click **Finish** to complete the installation.
- Step 5:** After installing the GW-US11H, the Windows XP will display a "**Wireless Network Connection**" message.



Click on the message and the "**Automatic Wireless Network Configuration**" will then appear automatically and allow use to choose to connect a wireless infrastructure network (Access Point), shown as the below figure. You may click the **Advanced** button to make advanced configuration for the Wireless LAN USB Card, shown as below.

# 5

## Installation of the GW-US11H under Windows XP

### 11Mbps Wireless LAN USB Card



For more information on using the automatic wireless network configuration please refer to Windows XP **Help** file.



# 5

## Installation of the GW-US11H under Windows XP

### 11Mbps Wireless LAN USB Card

However, the WLAN Utility, which comes with the GW-US11H, provides you more tools to configure the GW-US11H and monitor the wireless connection.

#### Note:

To use the WLAN utility under Windows XP, you need to disable the **Automatic Wireless Network Configuration** first. Steps are described as follows:

- click the **Network Connections icon**. Select Properties.
- Go to the **Wireless Networks** tab.
- Uncheck the "Use Windows to configure my wireless network settings" check box and click the **OK** button (see the above picture).

#### ■ Installation of the Wireless LAN Utility

**Step 1:** Insert the Product CD-ROM or floppy disk again.

**Step 2:** Go to the **utility** folder and run **setup.exe**.

**Step 3:**The InstallShield Wizard will show up and guide you through the rest of the setup process.

Upon completion, go to **Program Files/GW-US11H** and run the "**PLANEX GW-US11H Wireless LAN USB Adapter**" and its icon will appear in the **System Tray** in the bottom right corner of your task bar. Clicking on the icon will open the configuration window. When you minimize the window, the system tray icon will be loaded in the System Tray again.

#### ■ Usage of the Wireless LAN Utility

The Wireless LAN Utility consists of window with 4 items for you to monitor and configure the Wireless LAN Card: **Configuration, Link Test, AP Browser and About**.

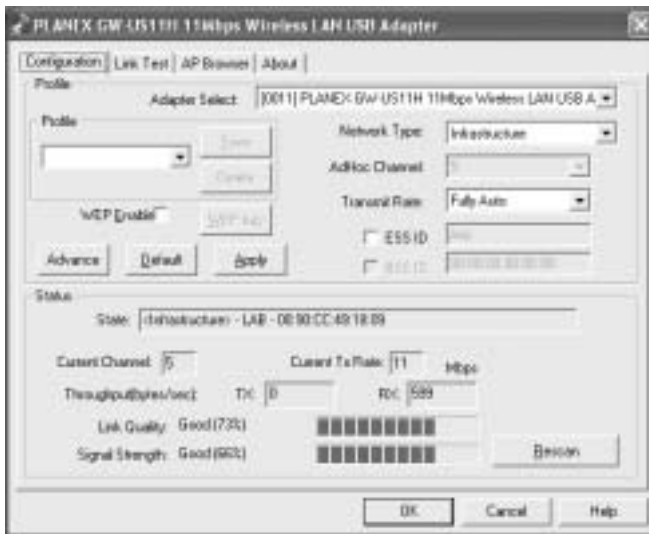
# 5

## Installation of the GW-US11H under Windows XP

### 11Mbps Wireless LAN USB Card

#### ● Configuration:

The **Configuration** item allows you to modify the configuration parameters for the GW-US11H such as **Profile**, **Network Type**, **Ad-Hoc Channel**, **Transmit Rate**, **ESSID**, **WEP**, **RTS/CTS**, **Fragment Threshold**, and **Power Save mode**. Furthermore, you may monitor the current status of the GW-US11H such as **State**, **Current Channel**, **Current Tx Rate**, **Throughput**, **Link Quality** and **Signal Strength**.



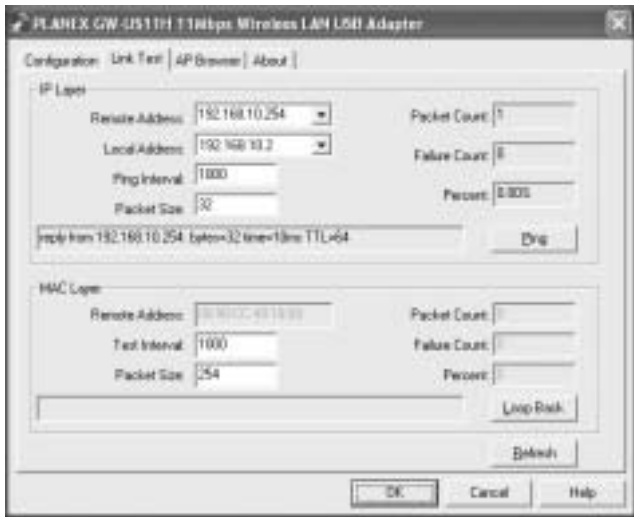
# 5

## Installation of the GW-US11H under Windows XP

### 11Mbps Wireless LAN USB Card

#### ● Link Test:

The **Link Test** tool helps you examine data transmission quality between your GW-US11H and any workstation on the network. By entering IP address of 2 remote station, setting ping interval and packet size, you may know whether communication has been made successfully or not. Additionally, you may run the loopback test (proprietary) by clicking the **Loop back** button to verify the communication quality **between your wireless station and Access Point**. The **Refresh** button is used for setting the counters back to 0.



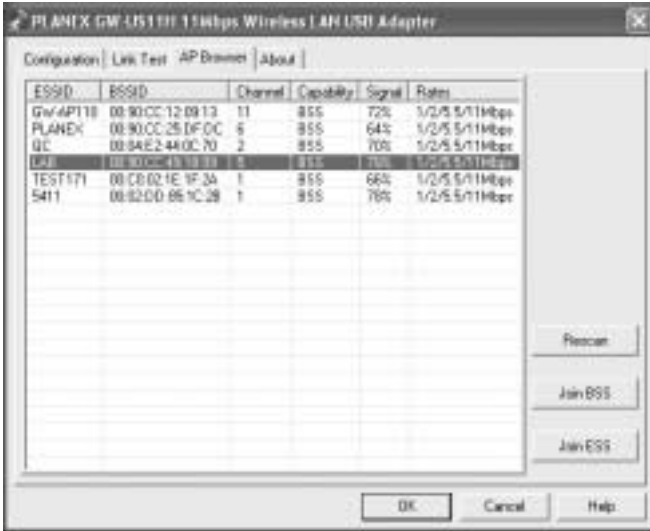
#### ● AP Browser:

By clicking the **Rescan** button, the AP Browser can display Access Points around the working environment. Besides showing the ESSID of each Access Point, it also displays BSSID, Channel, Signal, Quality and Supported Rates. To join any of the displayed Access Points, highlight the Access Point you desire to connect and then click the **Join BSS** (when there are more than 2 Access Points with the same ESSID), or **Join ESS** button to join the group.

# 5

## Installation of the GW-US11H under Windows XP

### 11Mbps Wireless LAN USB Card



#### ● About:

The About item shows the versions of the Wireless LAN Utility, driver, firmware of the GW-US11H. Also, the MAC address and frequency domain are displayed.



# 6

## Quick Tips to Configure the GW-US11H

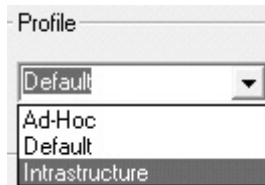
### 11Mbps Wireless LAN USB Card

This Quick Start Guide covers the basic features needed to use the GW-US11H. Follow these steps to configure network settings.



#### ● The Profile (Optional)

The **Profile** field allows you to set values for all parameters by selecting a previously defined profile. To create the profile, go to the **Profile** field, type a profile name and set the corresponding parameters. After changing parameters, save the profile and click the **Apply** button to take effect. You can have multiple profiles and modify the profile at any time.



You may also see the profile from Wireless LAN Utility icon that appears in the System Tray in the bottom right corner of your task bar by using right click the Wireless LAN Utility icon or may choose the profile by right clicking the system tray icon on the task bar, making the configuration more friendly and efficient.

# 6

## Quick Tips to Configure the GW-US11H

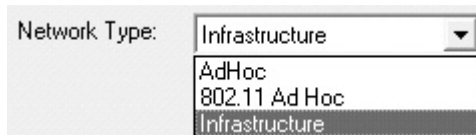
### 11Mbps Wireless LAN USB Card



#### ● Set the Network Type

From the Main Menu, click the **Configuration tab**, go to **Network Type** and click the down arrow at the right of the **Network Type** field. You will then see 3 network types for the GW-US11H to operate. If you need to access company network or Internet via Access Point, select "**Infrastructure**". To set up a group of wireless stations for file and printer sharing, select "**AdHoc**" or "**802.11 AdHoc**" (without Access Point). If **Ad-Hoc (without access point)** is selected, you need to set wireless stations with the **same channel** For **802.11 AdHoc**, the **same channel and ESS ID** are required to the wireless stations.

**Ad-Hoc only provides by certain factory's product.**



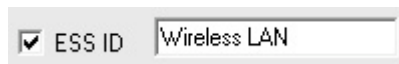
# 6

## Quick Tips to Configure the GW-US11H

### 11Mbps Wireless LAN USB Card

#### ● Set the ESS ID

The ESS ID is the unique ID used by Access Points and stations to identify a wireless LAN. Wireless clients associating to any Access Point must have the same ESS ID. The default setting is ANY, which allows your GW-US11H to automatically associate to any Access Point (Infrastructure mode) in the vicinity of your wireless adapter. Alternatively, you may check the ESS ID check box to specify the **ESS ID**. It will then attempt to associate with Access Points or stations with the same ESS ID. The ESS ID can be set up to 32 characters and is case sensitive.



Check here before entering the ESS ID

#### ● Set the Encryption:

To prevent unauthorized wireless stations from accessing data transmitted over the network, the Wireless LAN Card offers highly secure data encryption, known as WEP (Wired Equivalent Privacy). The Encryption tab allows you enable encryption and set the encryption keys, making your data transmission over the air more secure. To activate the WEP Encryption, go to the **Configuration** tab and check the **WEP Enabled** check box. An Encryption window will then appear. The instructions are as follows:

From the WEP encryption item, pull down the menu and it will list two methods to set the WEP keys, as described below:

#### **Create Encryption Keys by Using a Passphrase**

To create encryption keys by using a passphrase, click the **Create Key with Passphrase** check box and type a character string in the **Passphrase** field. As you type, the utility uses an algorithm to generate 4 keys automatically. Select either the **64bit** or **128bit** encryption first and type a string in the **Create Key with Passphrase** field. Select one key from the 4 WEP keys and click **OK**. Then click the **Apply** button on the **Configuration** tab to make the setting take effect.

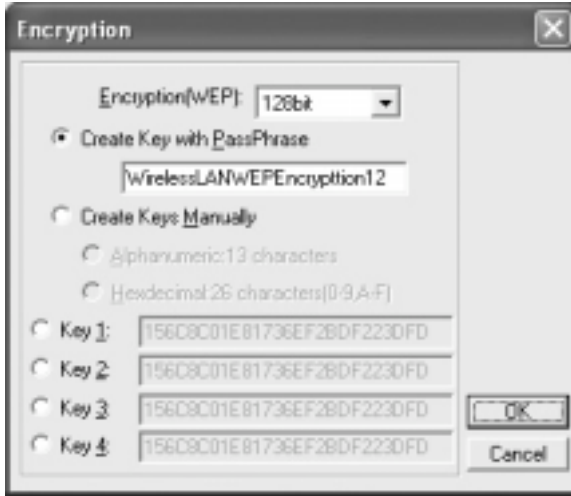
# 6

## Quick Tips to Configure the GW-US11H

### 11Mbps Wireless LAN USB Card

#### Warning:

When **Create Key with Passphrase** is enabled, the Access Points you use must need to support Passphrase as well so that the communication can be established.



Create Encryption Keys Using a Passphrase (128-bit)

#### Create Encryption Keys Manually

You can also create up to 4 encryption keys manually by clicking the **Create Keys Manually** check box.

For 64bit encryption you may choose:

■ **Alphanumeric: 5 characters** (case sensitive) ranging from "a-z", "A-Z" and "0-9" (e.g. MyKey)

■ **Hexadecimal: 10 hexadecimal digits** in the range of "A-F", "a-f" and "0-9" (e.g. 11AA22BB33)

For 128bit encryption you may choose:

■ **Alphanumeric: 13 characters** (case sensitive) ranging from "a-z", "A-Z" and "0-9" (e.g. MyKey12345678)

■ **Hexadecimal: 26 hexadecimal digits** in the range of "A-F", "a-f" and "0-9" (e.g. 00112233445566778899AABBCC).

# 6

## Quick Tips to Configure the GW-US11H

### 11Mbps Wireless LAN USB Card

After entering the WEP keys in the key field, select one key as active key, click the **OK** button and then click the Apply button to make setting take effect.



**7****Technical Support****11Mbps Wireless LAN USB Card**

The firmware version of the GW-US11H is displayed on the utility About window. Users could download the most recent software version from the supplier's web site or refer to the selling contact for the latest software information. If you have difficulty resolving the problem while installing or using the GW-US11H, please contact the supplier for support.

<http://www.planex.net>  
<http://www.planex.com.tw>