

2.4 GHz IEEE 802.11g 54Mbps

Wireless LAN USB Adapter

GW-US54GXS

USER'S MANUAL FOR MAC



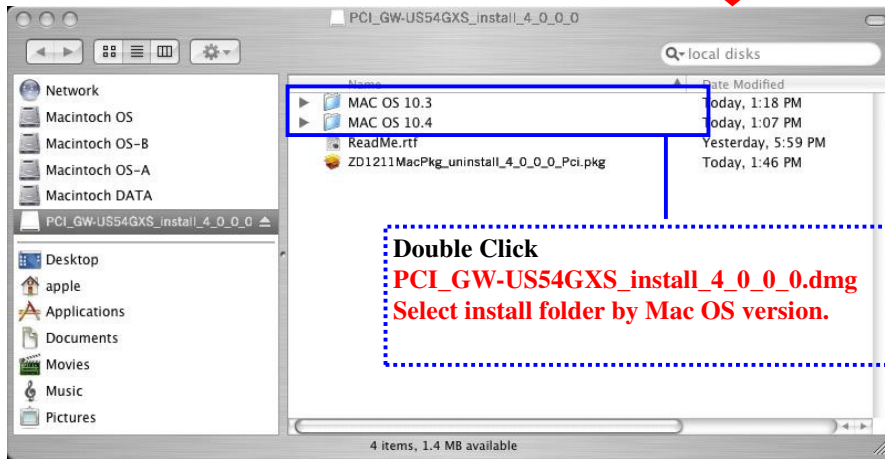
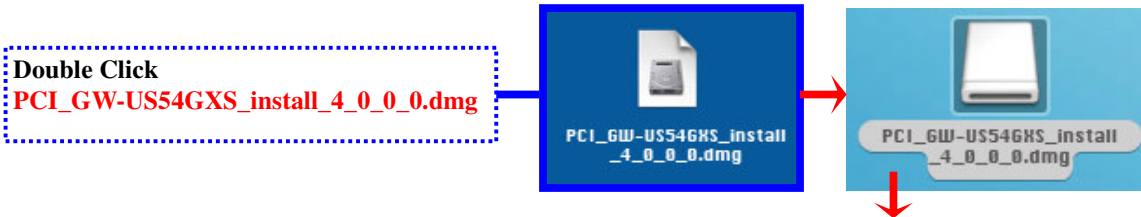
Planex Communications Inc.

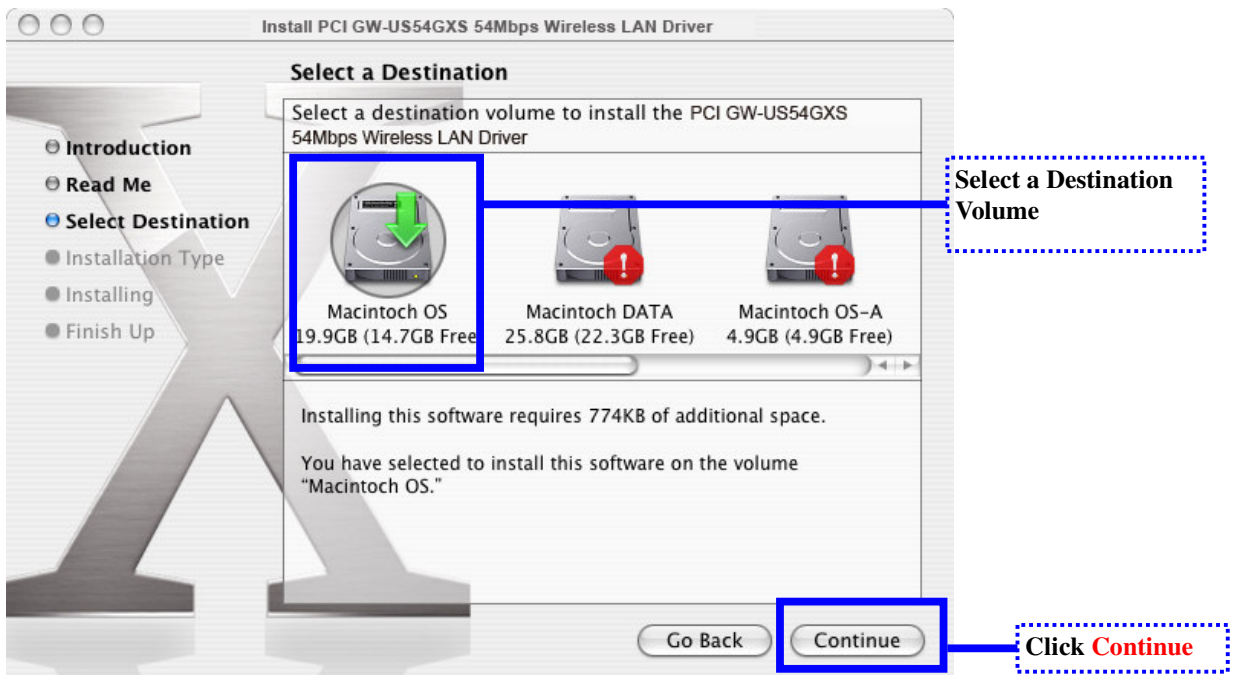
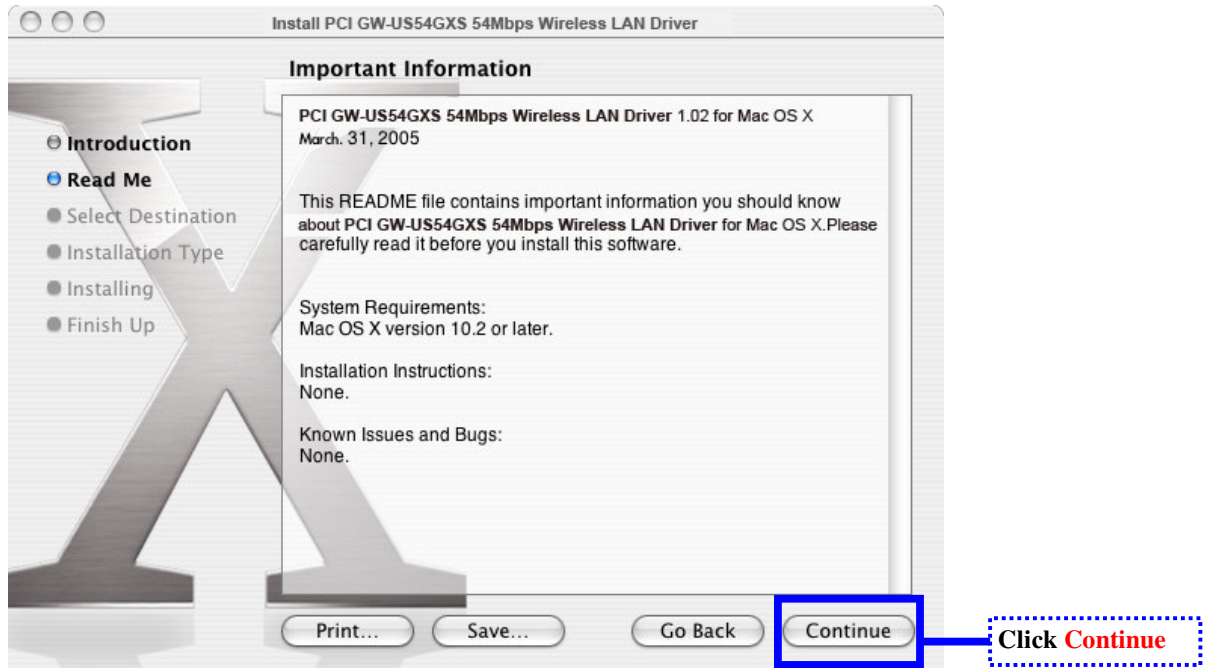
Table of Contents

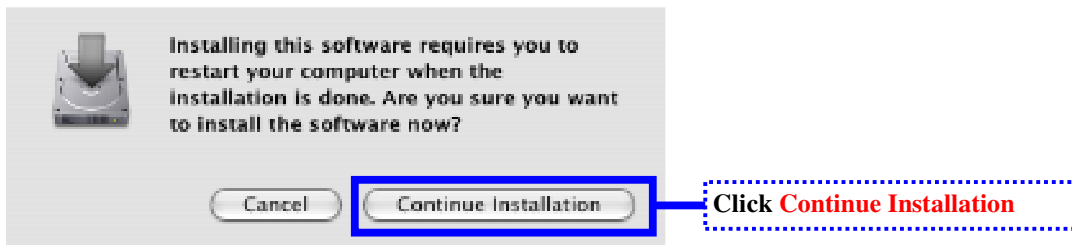
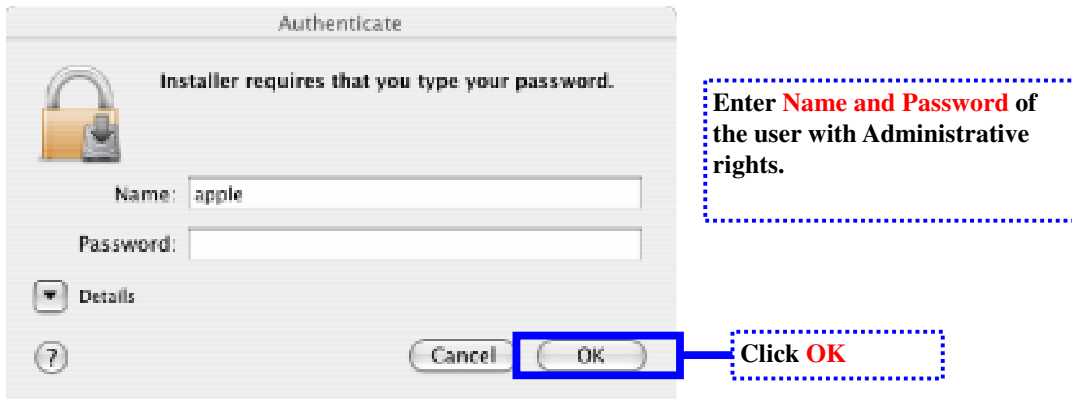
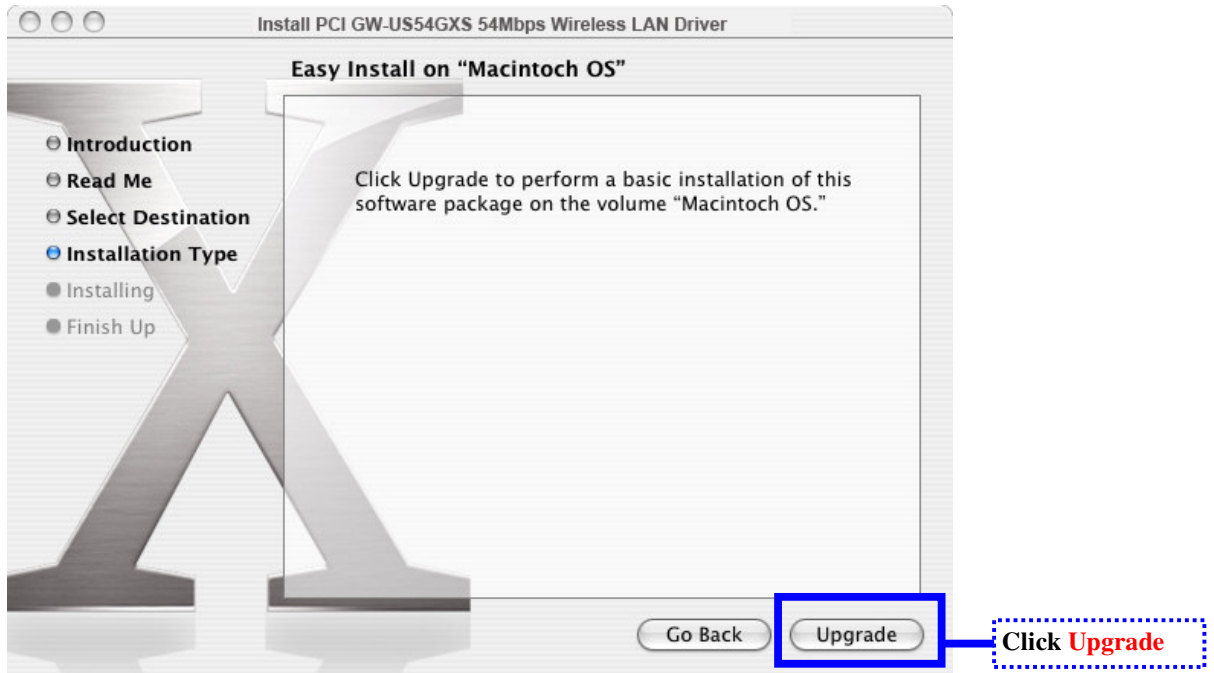
1. Install GW-US54GXS Driver and GW-US54GXS Utility.....	2
2. Using WLan.app Utility.....	8
3. Uninstall GW-US54GXS Driver and GW-US54GXS Utility.....	15

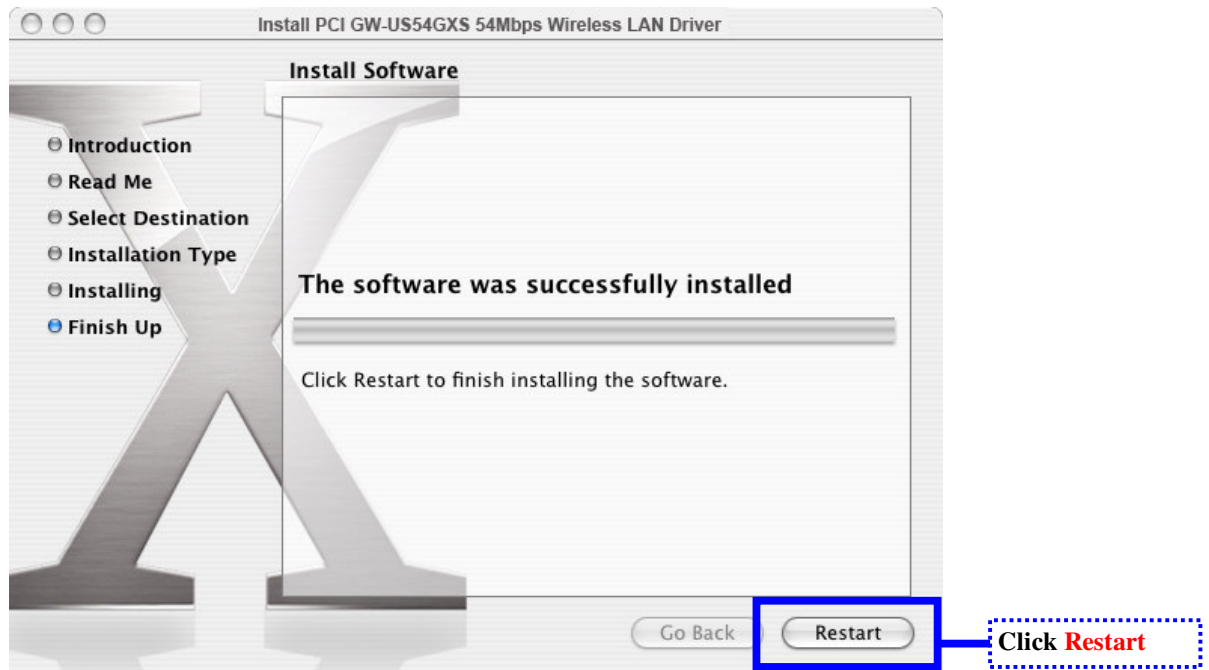
GW-US54GXS User's Manual for MAC

1. Install GW-US54GXS Driver and GW-US54GXS Utility



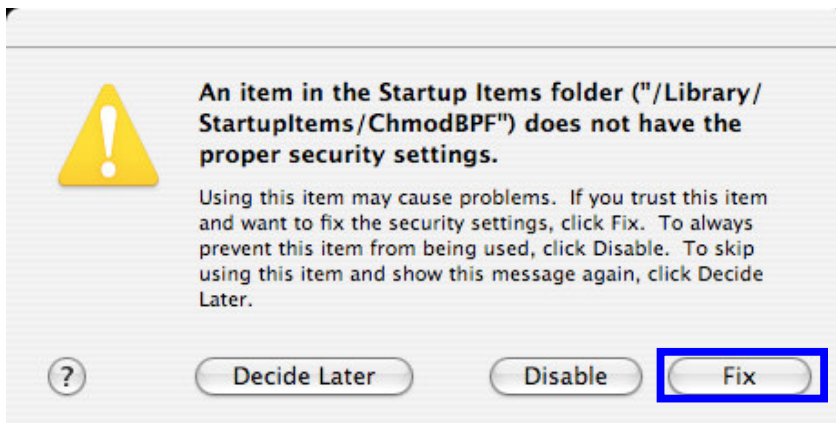




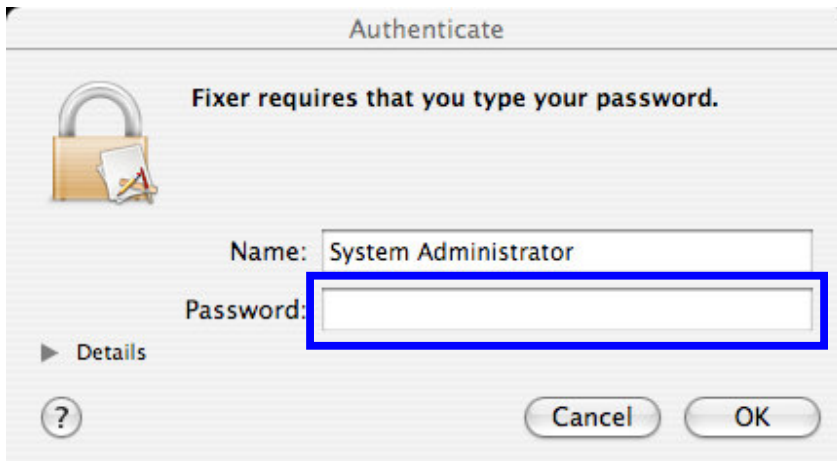


Now the Driver and Utility Installation is Complete! Restart the computer.

After restart, for Mac OS X 10.4 or later, you will see the following warning window pop out, please click “Fix” button to proceed.

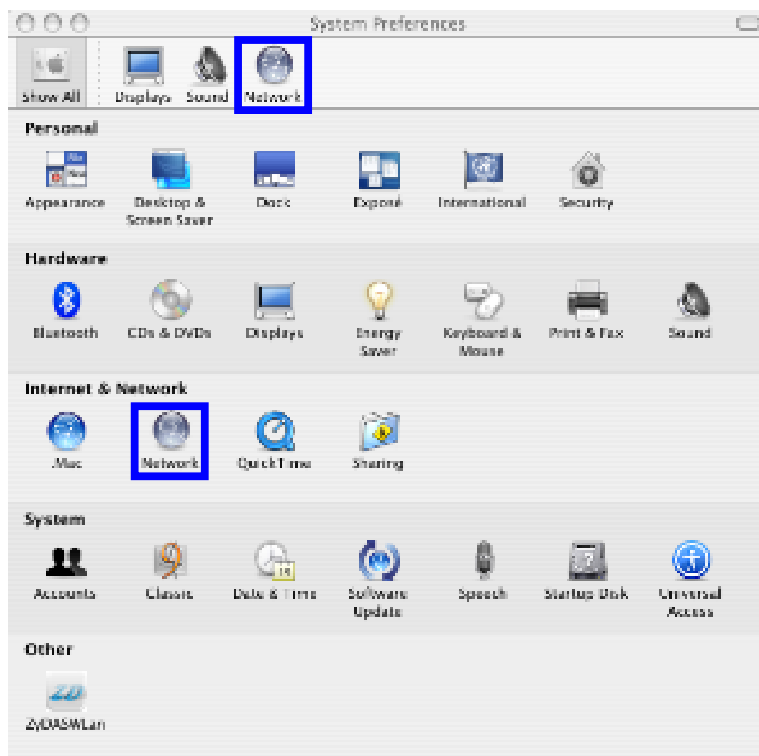


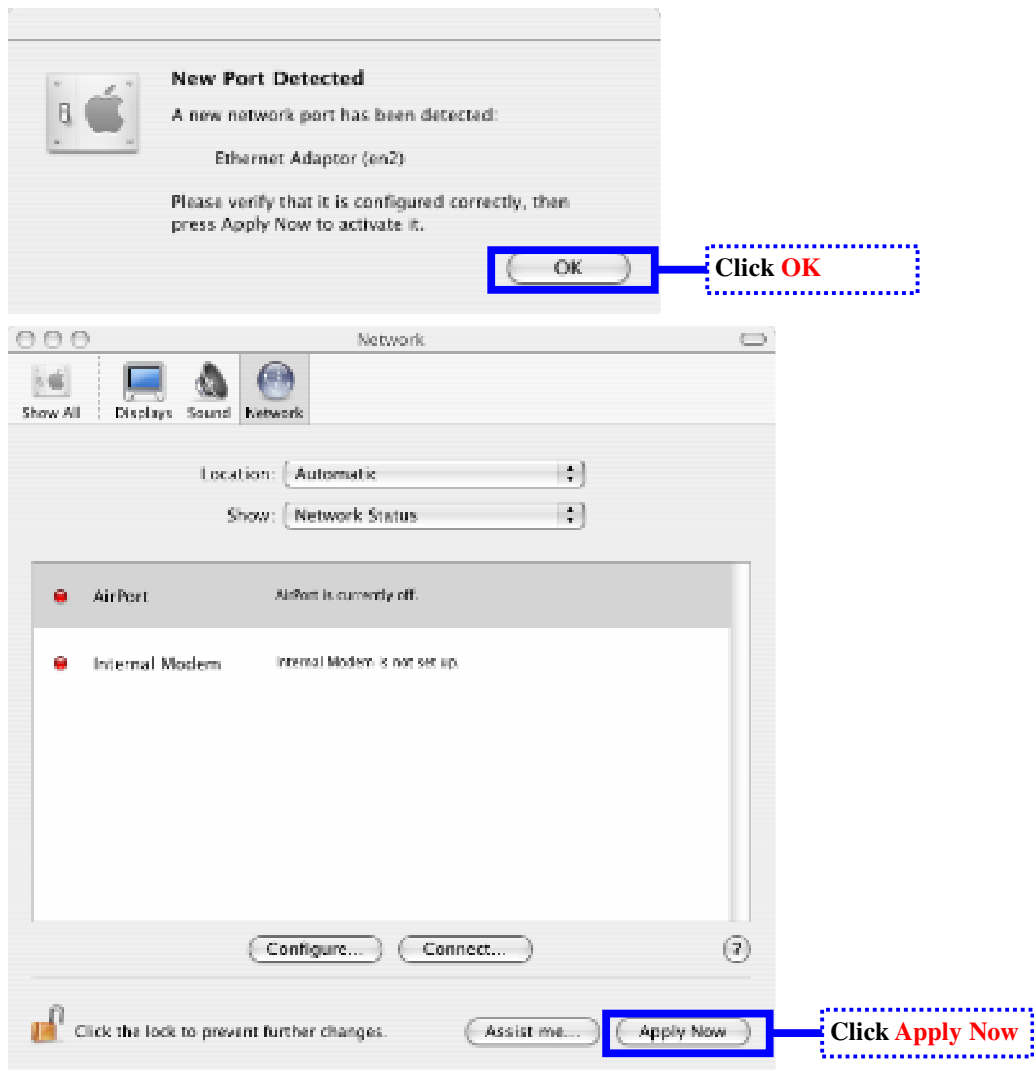
After pressing “Fix” button, you will see the following authentication dialog, please enter the correct password to proceed the process.



Please be patient to let system **restart** again after entering the correct password!

If this the first time you run this Wireless card after installation, please enable the new network interface in the **Network Control Panel** in **System Preferences**.
It is essential to follow the steps in below, before first launch of GW-US54GXS utility.





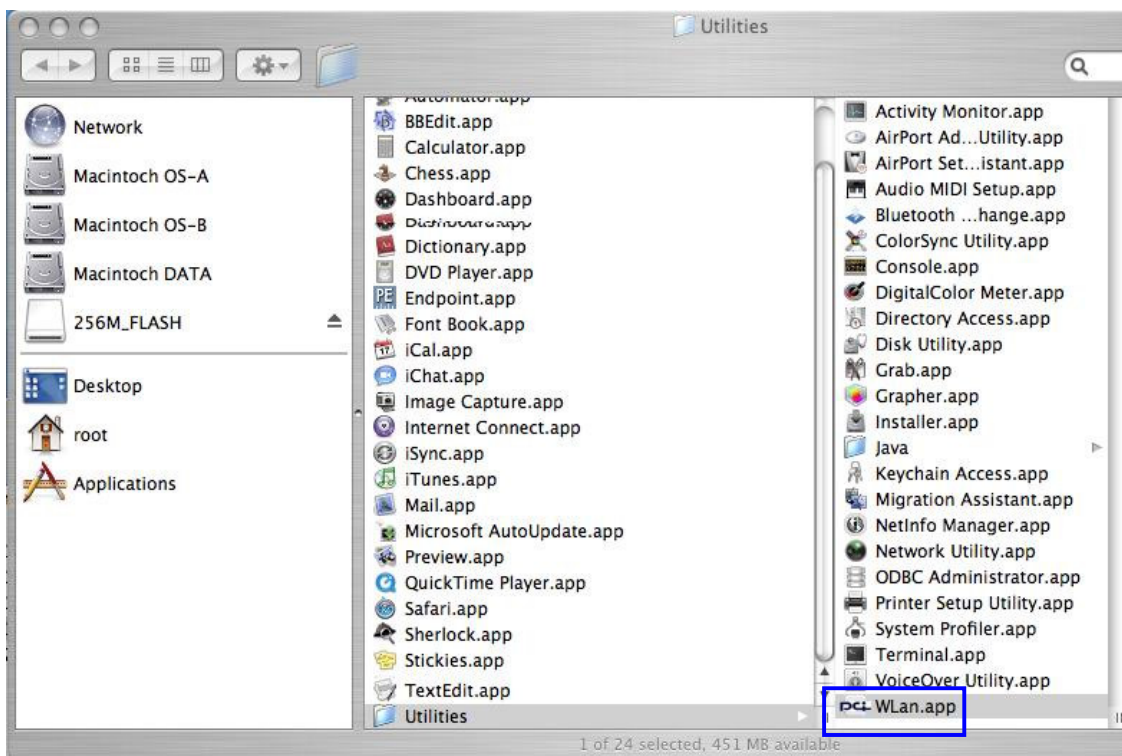
Now It's ready to use Wireless.

2. Using Wlan.app Utility

- When to run Wlan utility and find out Wlan utility to run.

After installation, the Wlan.app utility will be launched automatically at system startup. Anyway, you can also re-execute it from the following path (as the following figure) after you quit the utility or utility exit abnormally for some reasons.

Note: The Wlan.app application bundle located at directory of **/Applications/utilities/**.



Open the setup window by clicking “Open setup window” subitem from the “Setup” top menu.

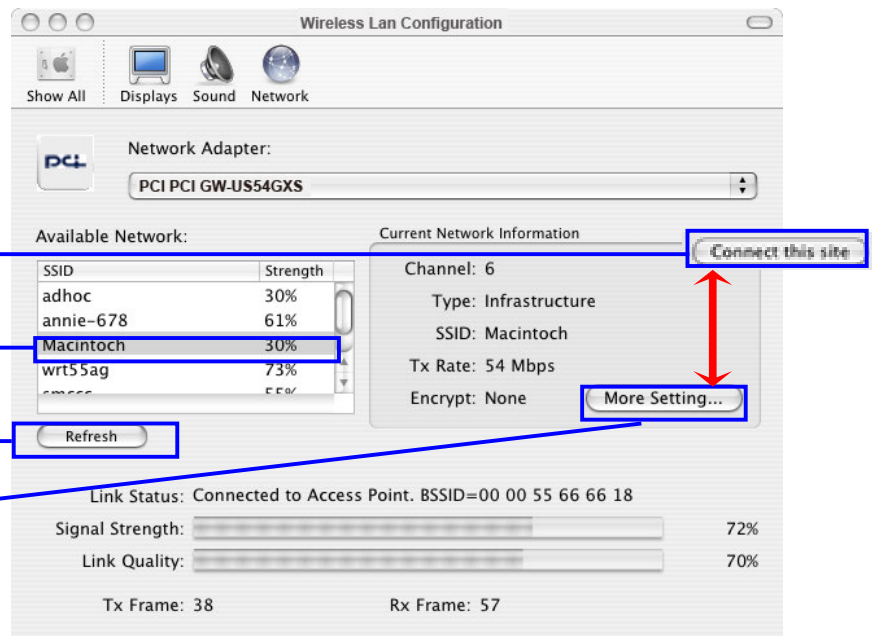


MainView

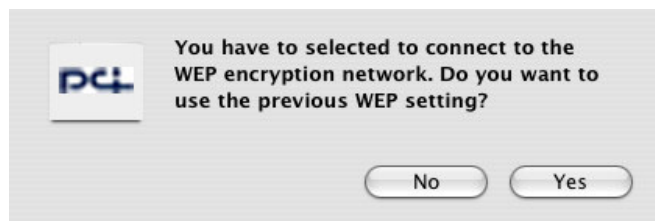
Double Click one SSID in Available Network or **Click Connect this site** : it would connect to the selected site SSID.

Click Refresh: Site survey.

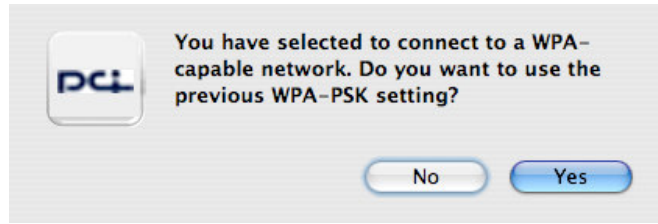
Click More Setting...: Open more setting panel



A request dialog would pop out if need Encryption in WEP. “No” for configure new key setting, “Yes” for use previous setting.(As shown in the right figure)



A request dialog would pop out if WPA PSK is required. Click "Yes" button to use current WPA pre-shared key, Click "No" to setup a new WPA pre-shared key. (As shown in the right figure)



General Connection Setting

WirelessMode: 2.4GHz(802.11b+g)

Channel: 6

SSID: wap54g

Network Type: Infrastructure

Encryption: TKIP

Authentication Mode: WPA PSK

Change

Encryption Setting

WEP Encryption Key Setting WPA PSK Setting

Profile

Profile name: wap54g

Load Save Delete

Other

For view information...

Information

OK

More Setting

Allow user to modify the connection setting. The button face change to "Apply" after clicking the "Change" button.

Edit WPA Pre-shared key.

Edit WEP static key

Profile management

View MAC address and version information.

Close the More Setting Panel

General Connection Setting

WirelessMode 2.4GHz(802.11b+g)

Channel 6

SSID wap54g

Network Type Infrastructure

Encryption TKIP

Authentication Mode WPA PSK

Apply

Encryption Setting

WEP Encryption Key Setting WPA PSK Setting

Profile

Profile name wap54g

Load Save Delete

Other

For view information...

Information

OK

Apply the new setting.

- Modifying the static WEP key.

WEP Key Setting

Key Length: 64 bit 128 bit 256 bit

Default Key ID: #1

Key Format: Hexadecimal ASCII

Key Value: #1: [text input]

#2: [text input]

#3: [text input]

#4: [text input]

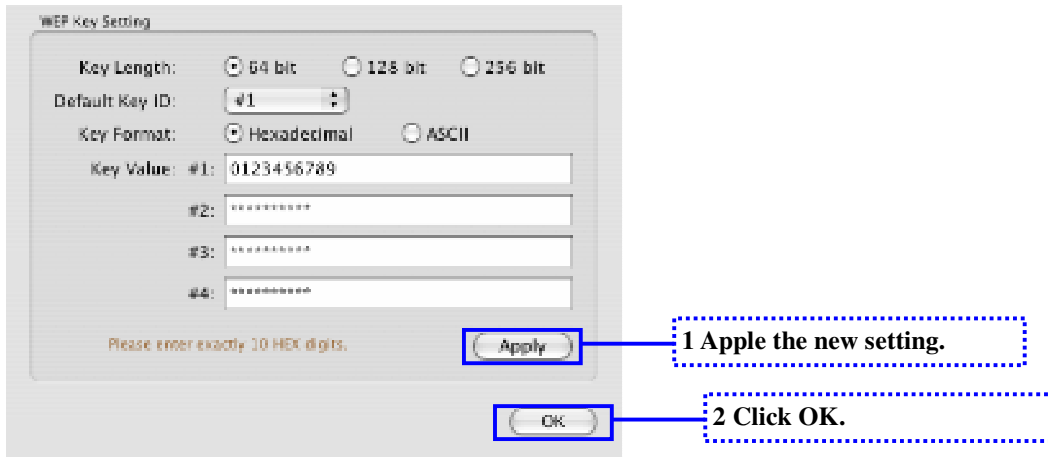
Please enter exactly 10 HEX digits.

Change

OK

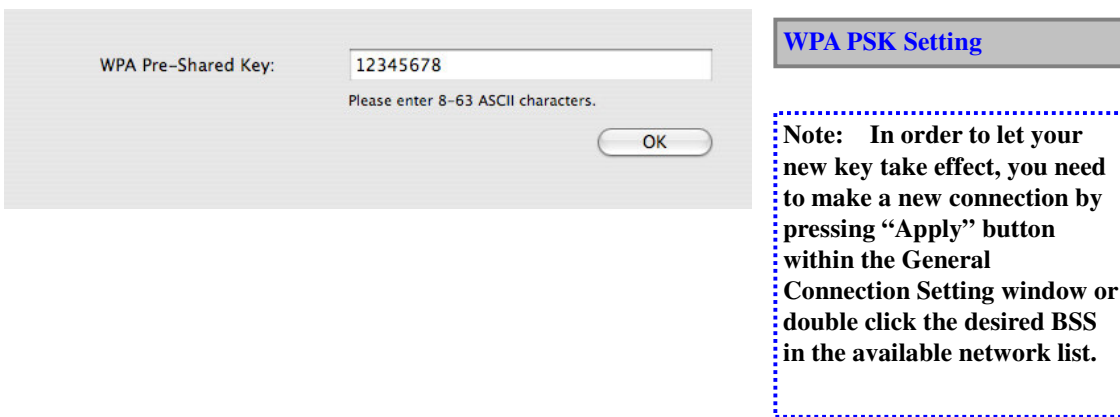
WEP Key Setting

Note: If you open the “Wep Key Setting” along by click the button “WEP Encryption Key Setting” from More setting panel, you need to do re-connection by “apply” or double click the AP by the list of available network.

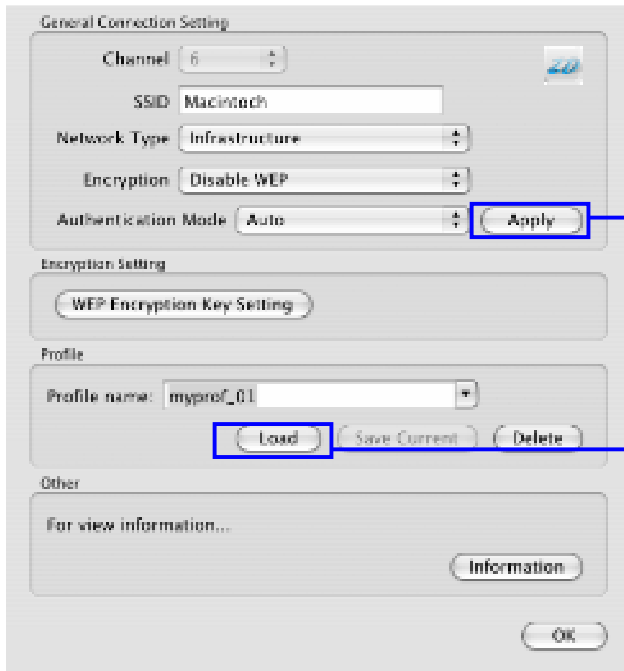


- Modifying static WPA PSK key.

- To enter WPA pre-shared key, you need click “WPA PSK setting” button within the General Connection Setting window. A WPA pre-shared key edit window shown as the following figure:
- Please press “OK” button to close the dialog when you finish editing of WPA PSK.



- Profile management:



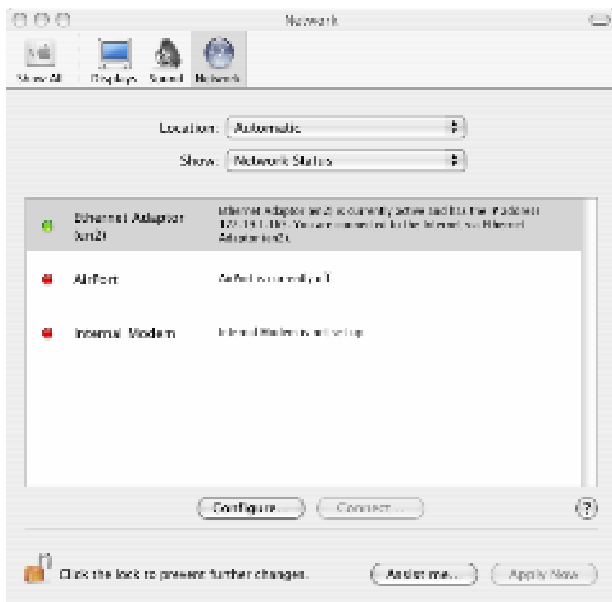
Profile

2 Click Apply to setting.

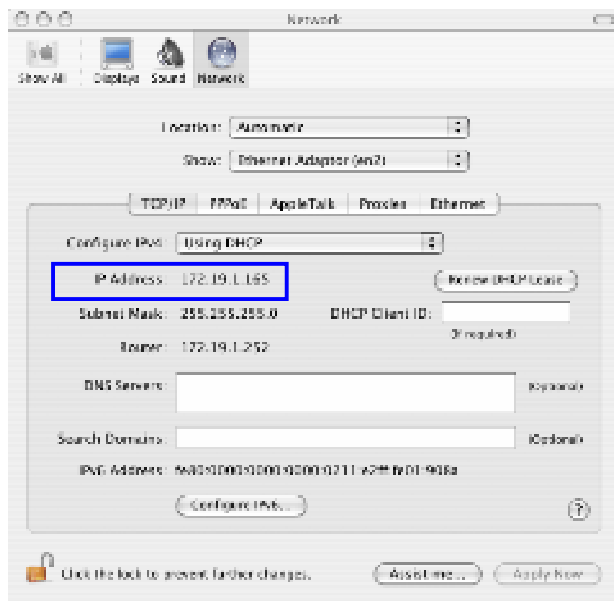
1 Load the selected profile.



Information



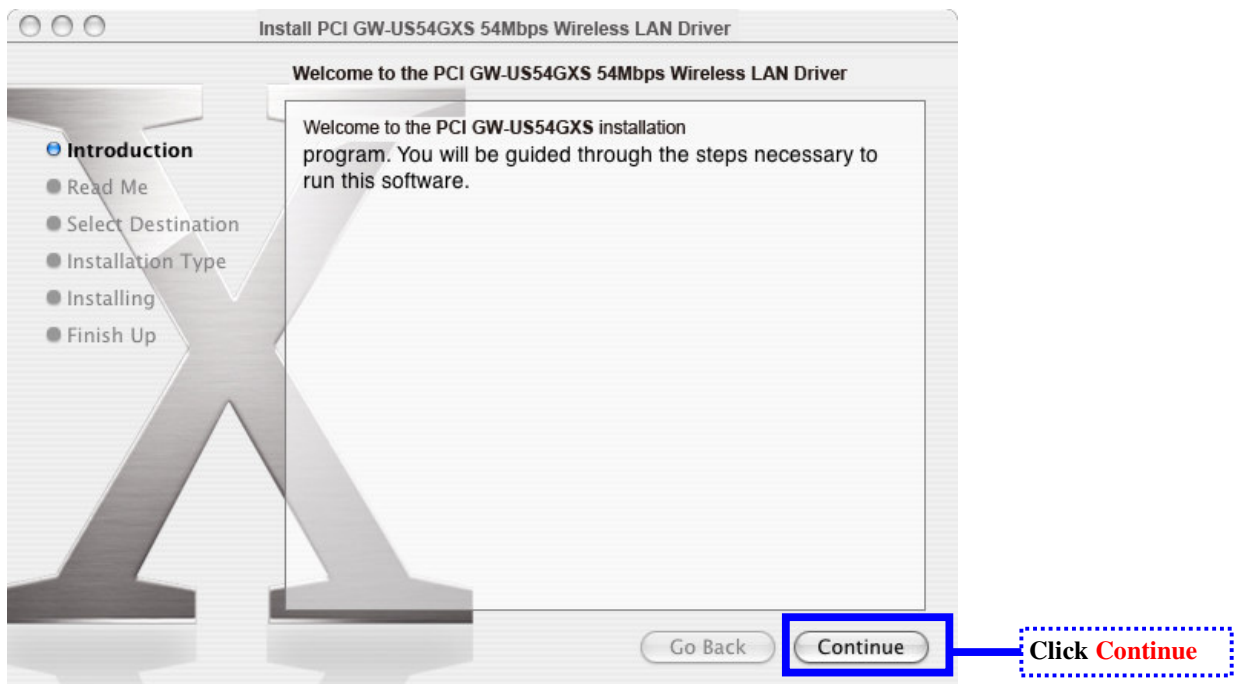
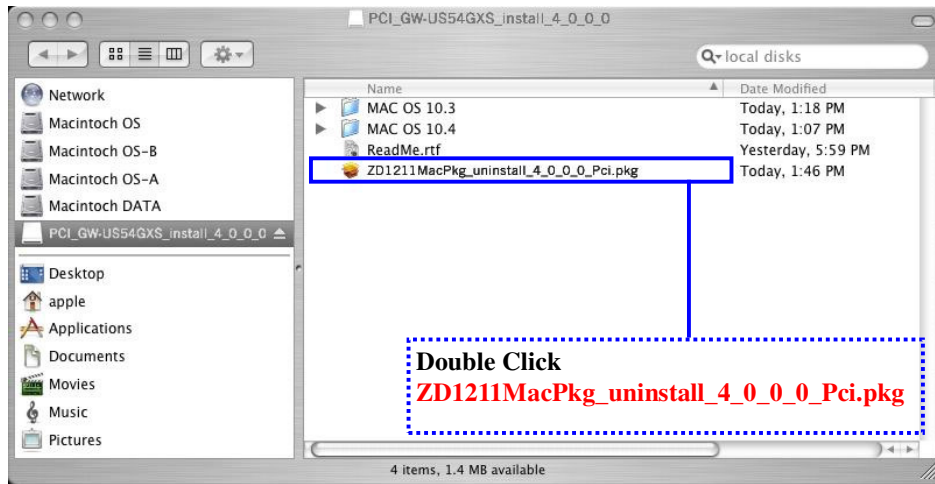
Network setting

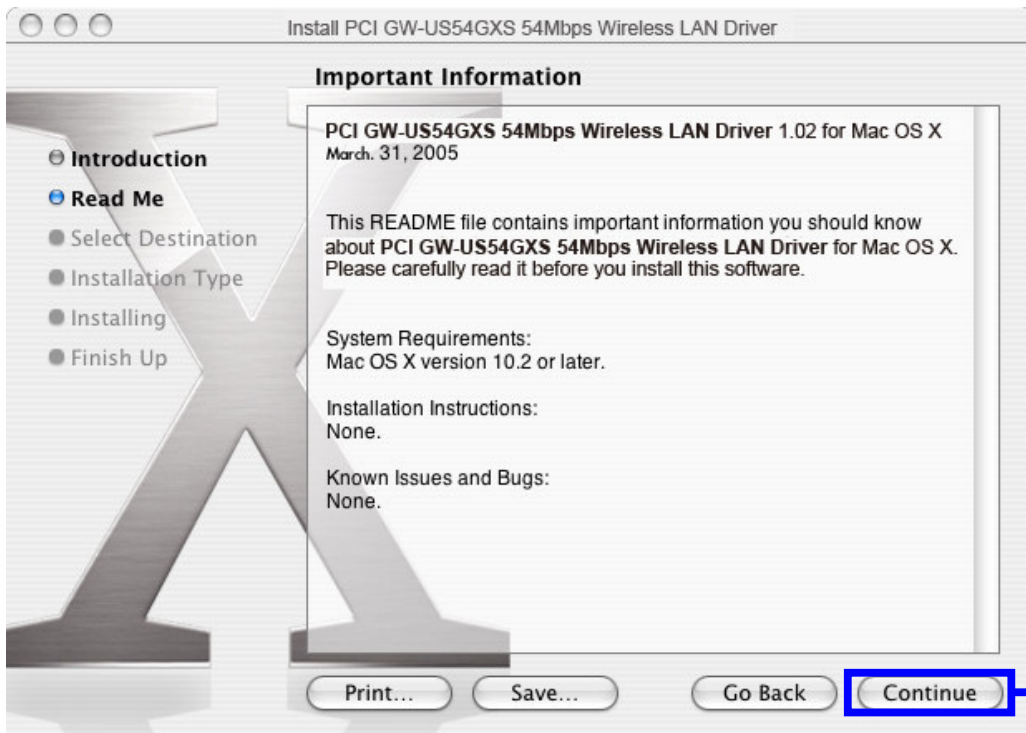


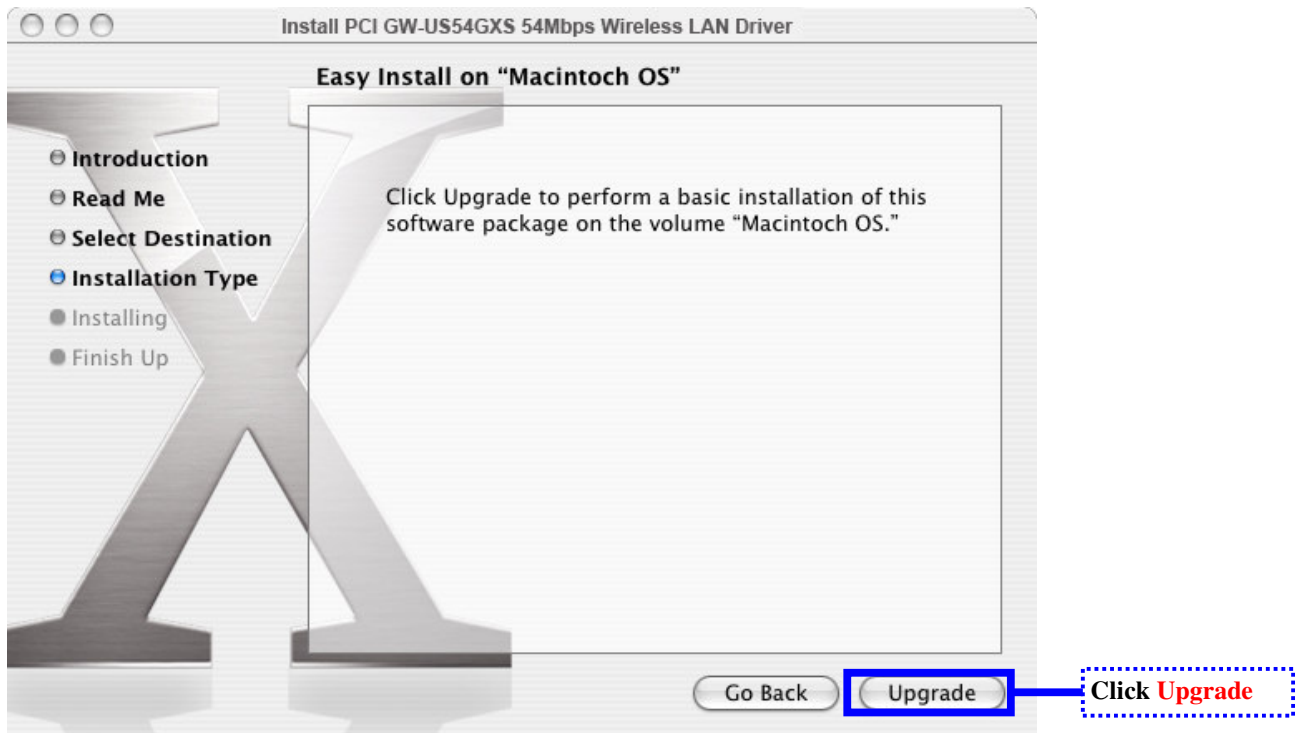
Check the TCP/IP setting for your network.

3. Uninstall GW-US54GXS Driver and GW-US54GXS Utility

Please close Utility before uninstall it!









Now un-installation is Complete!