

Install the Driver and Utility

Driver Installation

Note: DO NOT insert your USB Wireless Adapter into your computer until after you have completed steps 1 and 2.

1) Power on your Apple computer and insert the Setup CD into your CD-Rom Drive. A folder should automatically open. If the folder does not open up automatically, click on the CD icon on your desktop to manually open the folder.

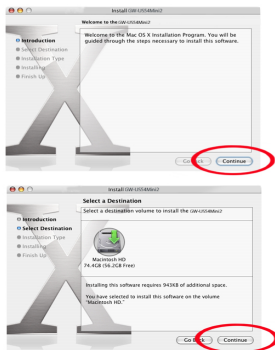
2) Double click the icon in the folder that is titled "GW-US54Mini2_v1.1.7.0.dmg"

The Setup Menu page will load.

3) In the Setup Menu page select either "USBWireless-10.3" or "USBWireless-10.4" depending on which Mac OS you have. If you are uncertain which OS you have, select the Apple icon on the top left of the menu bar and select "About This Mac". The version number should appear in a pop up window.

Click "Continue" to begin.

4) Select the location on your computer where you wish to install the software and click "Continue."

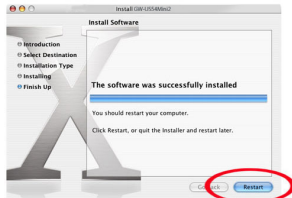
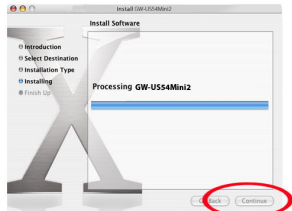


Driver Installation

5) Click "Continue" on the following frames to complete your installation.



6) Click "RESTART" to reboot your computer.



Connect to Your Wireless Network

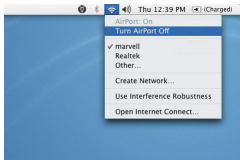
1) INSERTING THE WIRELESS ADAPTER

- (a) After you have completed the Utility Installation, carefully insert your USB Wireless Adapter firmly into an available USB port on your computer.
- (b) When the adapter is properly inserted, carefully rotate and angle the unit so it points upright.

Note: Use caution when raising the antenna upright. Do NOT over-extend the antenna past a 90 degree angle. You may rotate the antenna 180 degrees in a counter clockwise or clockwise position.

- If You Have a Previously Installed Airport Card

- (a) If you have an Airport card installed on your computer you will need to turn it off to use the PCI USB Wireless Adapter. To do this, select the Airport Icon on the top right corner of your screen and select "TURN OFF AIRPORT"

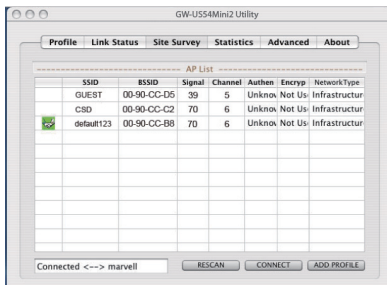


2) USING THE PCI USB WIRELESS UTILITY

Each time you insert the PCI USB wireless adapter, the PCI USB Wireless Utility should automatically load. In the case that it doesn't you may manually load the Utility by using "FINDER" to view your "APPLICATIONS" folder and selecting the PCI USB Wireless Utility Icon.

The Configuration Utility is categorized into 6 Tabs. For this QIG, we will concentrate only on the **SITE SURVEY** and **LINK STATUS** tab. If you wish to find out more about the Utility, please view the Users Manual for detailed instructions.

The **SITE SURVEY** tab will give you information regarding the wireless networks within your vicinity.

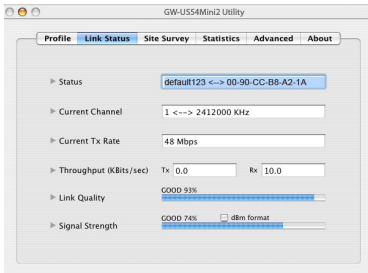


1) Click on **Rescan** to update the list of wireless networks in your area.

2) Once the list of wireless networks appear, highlight your desired network and double-click to **Connect** to the network. You should now be successfully connected to your network.

Note: If your scan provides no wireless networks, double check to see if your wireless network is set up correctly. If the problem persists, check with your wireless AP/Router manufacturer's technical support department.

3) READING THE LINK STATUS PAGE AND OBTAINING THE STRONGEST SIGNAL



The Link Status page gives you information regarding your current wireless channel, transmit rate (speed) and link/signal quality. You will use this utility to figure out which antenna position results in the best performance and connection.

- 1) First you must determine where the location of your Wireless Access Point is within your network.
- 2) Position the directional antenna towards the location of the Access Point.
- 3) While viewing your Link Status utility, rotate the antenna clockwise and counter-clockwise slowly to figure out which position gives you the highest Link Quality and Signal Strength. Once you have determined which position gives you the best signal, leave the antenna in that orientation.
- 4) When you are not using the USB Wireless Adapter, carefully put the unit out of the USB port and store the device in a safe place for storage or travel.

4) ENABLING WIRELESS SECURITY

If your current wireless network is using wireless security you will first have to figure out whether your network uses WEP or WPA. You can ask your system administrator if you do not know which standard you are using. For more detailed information on how to configure security please see the User's Manual.

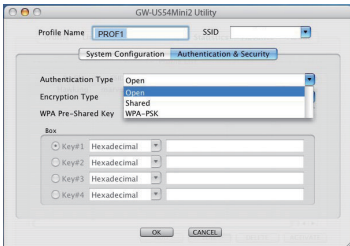
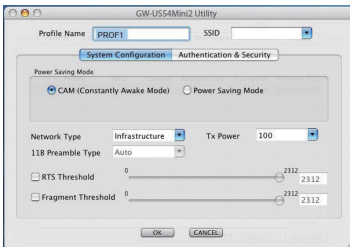
To enable the WEP or WPA in the USB Wireless Utility you do it two ways.

Recommended Method

The first is to simply do a SITE SURVEY and connect to the network. The Utility will prompt you to enter the security key to access the network. If you are unsure about your security key please contact your network administrator.

The second method is to create a **Profile** which allows you to save the security key used by your network so when you connect in the future you will not have to enter the key again.

To create a **PROFILE** select the Profile tab on the top left of the Wireless Utility. Click **Add** to create a profile.



- Enter a Profile name in the highlighted field to the right. This will help you easily recognize the profile for future use.
- Enter the exact SSID of the specific network you are creating a Profile for.
- Select **Authentication and Security** to set the security key.
- Select the correct Authentication type used by your network. The PCI USB Wireless Utility supports both WEP and WPA Wireless Security.
- Enter your specific network key into the spaces provided. Click **OK** when you have completed entering the information. Select **OK** one more time on the Profile page to save the profile.