

Quick Installation Guide
Draft IEEE802.11n Wireless Mini-USB Adapter
 GW-USMini2N
 English Ver.: 1.0_E

ADD : 9F,-1 No.188, Baociao Rd., Sindian City, Taipei County 231, Taiwan
 TEL : +886-2-7705-6689 FAX : +886-2-7705-6688 http://www.planex.net

Chapter1

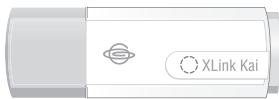
Package Contents

After purchasing GW-USMini2N, 802.11n Wireless Mini-USB Adapter, from a reseller or an agency, please open the package and check all the components listed below are included. If there is any item missing, please contact with the reseller or the agency at once.

- GW-USMini2N Wireless USB Adapter x 1
- CD-ROM(including Driver/Utility/User's Manual) x 1
- Quick Installation Guide x 1
- Warranty Card x 1

Chapter2

Product Profile



Chapter3

Software & Driver Installation Guide

Before installation, please observe the following:



Note:

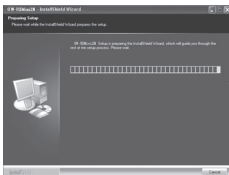
- 1.If you have any form of wireless utility installed beforehand, please uninstall it.
- 2.Please do not plug GW-USMini2N into your computer's USB port before installing the driver.

Chapter4

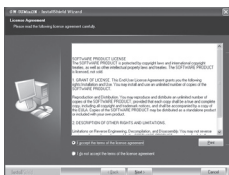
Installing GW-USMini2N Utility

Please follow the steps below in order to install the GW-USMini2N driver successfully.

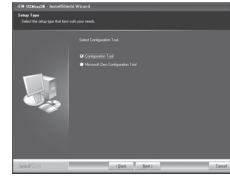
1. Insert the GW-USMini2N driver CD-ROM disc provided into the CD-ROM drive. The Installation Wizard shall load automatically.



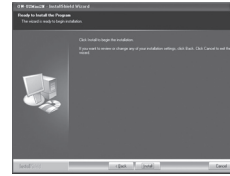
2. Before the installation begins, you'll be taken to the EULA page. Please read the details within. Click on **"I accept the terms of the license agreement"** and click on **"Next"** to proceed with the next step. If not, clicking on **"Cancel"** and exit the installation Wizard.



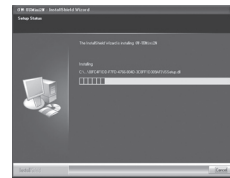
3. You can choose **"Configuration Tool"** to install both the driver and Planex Wireless Utility software, or you can choose **"Microsoft Zero Configuration Tool"** to install only the driver. After choosing the software you would like to install, click **"Next"** to start the installation process.



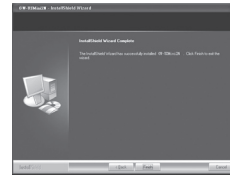
4. Click on **"Install"** to start the installation process.



5. Once the process starts, please do not close the installation window until it has completed. But, if you have to stop the process for some reason, click on **"Cancel"**.




6. Once the installation process ends, click **"Finish"** to end installation.



7. After the successful installation, proceed to plug in the GW-USMini2N into your computer's USB port. Your operating system will automatically detect and install the respective drivers. The message below should pop up to verify a successful hardware installation.



8. To verify if the GW-USMini2N was installed properly, please check the Planex Wireless Utility icon  located on the taskbar (Lower right-hand corner of the screen). Have your mouse cursor hover the icon and perform a right click. The pop-up menu, like the one pictured below will appear. Only upon a successful installation will the menu pop-up. If the icon is not located on the taskbar that means the Utility has not been started. Click on **"Start > Programs > Planex Wireless > Planex Wireless Utility"** to start the Utility.

