

*This manual explains how to connect the PC with which this product has been attached to the main unit such as a wireless LAN router.
 * "PLANEX Client Manager", the software attached with this product, runs on Windows 7/Vista/XP(32bit) SP3 or higher.
 * To install the driver for Windows 7(64bit)/Vista(64bit), refer to "Client manager help" - "Troubleshooting" - "When using Windows 64bit (XP/Vista/7)".
 * When using Mac OS X, or connecting a game device, or connecting a Wi-Fi supported mobile phone, or using XLink Kai, refer to the backside of this sheet.

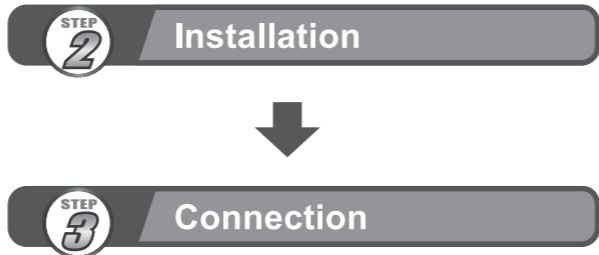
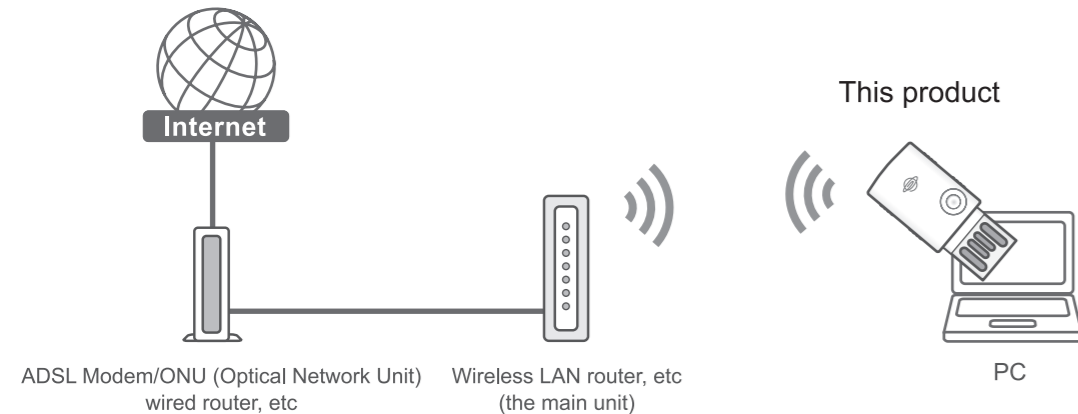
STEP 1

Confirming the procedure

Please confirm the flow of the following procedure before proceeding with the setup.

<<Connecting the PC to the wireless LAN main unit>>

* Connect the PC with this product to the main unit such as the wireless LAN router. Follow the setup procedure below.



STEP 2

Installation

Install the software following the procedure as follows.

*When using Mac OS X, or connecting a game device, or connecting a Wi-Fi supported mobile phone, or using XLink Kai, refer to the backside of this sheet.

Do not connect this product to your PC yet.

1 Turn on the PC, and set the attached CD-ROM in the PC's CD/DVD drive.

When using Windows 7/Vista
 - Click "Run AutoLoader.exe" when "Autoplay" screen is displayed.

- Click [Yes] or [Allow] when "User Account Control" screen is displayed.

If the menu screen is not displayed
 Open "Computer" (or "My Computer") and then double click the icon of CD/DVD drive.
If your PC does not have CD/DVD Drive, download the software from the following site.
<http://www.planex.net/download/wireless/gw-usmicro300.htm>

2 Click [Start Install].

3 Click [NEXT].

4 Click [Install].

5 Click [Finish].

Once the installation is completed, "PLANEX Client Manger" is launched. Move to **STEP 3**.

If the installation fails, refer to "Troubleshooting" - "When installation fails" on the backside of this sheet.

STEP 3

Connection

* Attach this product to the PC and then connect it to the wireless LAN router.

Notes This product deploys a "WPS" function that assists you to easily set up the wireless LAN connection. Before proceeding with this procedure, confirm that the wireless LAN router (the main unit) supports WPS.

* WPS (Wi-Fi Protected Setup) is a standard protocol to easily set up the security for wireless LAN device.

When your Wireless LAN router (the main unit) supports WPS

Move to "Easy Setup (WPS button)" or "Easy Setup (Client Manager)" on the back side of this sheet.

When your wireless LAN router (the main unit) does not support WPS

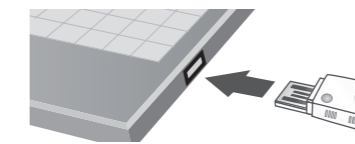
Move to "Standard Setup" on the back of this sheet.

! Before proceeding with this procedure, confirm that the wireless LAN router (the main unit) connects to the Internet.
 - Be sure to enable encryption (security).

Easy Setup (WPS button)

Connect to the wireless LAN by using the WPS button on this product and the WPS button on the wireless LAN router (the main unit).

1 Insert this product into the USB port of PC.

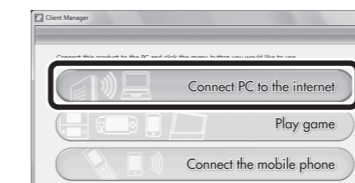


Notes For Windows 7/Vista
 - A message such that "A new hardware is detected" is displayed on the screen. Move to next step.

For Windows Vista
 - Click [Continue] when "User Account Control" screen is displayed.

* Please be aware that it might be displayed in the taskbar at the bottom of the screen.

2 Click [Connect PC to the internet].



Notes When this product is not inserted into the PC, the screen on the right is displayed. Insert this product into the PC and then click [OK].

! For Windows 7/Vista 64bit, the screen on the right is displayed. Manually set up this product. For the setup procedure, refer to Help.
 * Click [OK], and then the Help window is automatically launched.
 * Once the installation is completed, start the procedure at **2**.

3 Click [Yes].

* If this window is not displayed, move to **4**.

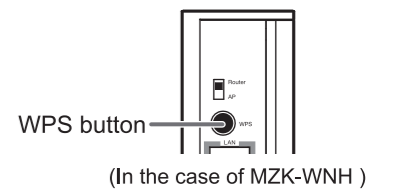
Notes For Windows 7/Vista
 - Click [OK] when the screen on the right is displayed.

4 With keeping the screen on the right displayed, move to **5**.

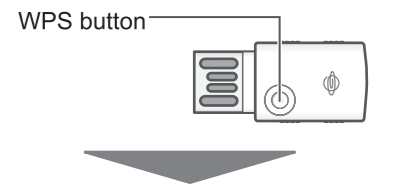
* If the screen on the right is closed, double-click "Client Manager Wizard" on the desktop, and start the procedure at **2**.

5 Press the WPS button on the wireless LAN router (the main unit).

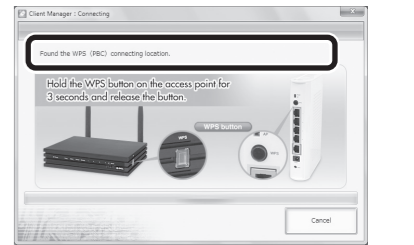
* The position of the WPS button and the operating instruction differ depending on the wireless LAN router. For details, refer to the manual of your router.



6 After the operation **5**, press and hold the WPS button on this product for 2 seconds or more.



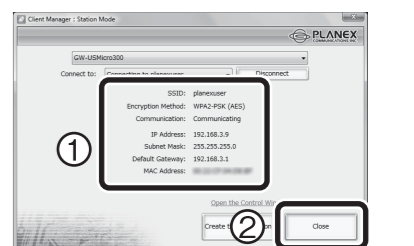
This product searches for an access point, and when it is detected, "Found the WPS (PBC) connecting location" is displayed.



! If connection failed, please try again.
 If the connection is not established even after retry, follow the procedure below.
 ① Reboot the PC.
 ② Double-click "Client Manager Connect Wizard" on the desktop, and start the procedure at **2**.

7 When connection is established, the screen on the right is displayed. Click [Close] after confirming that IP address subnet mask default gateway is assigned.

* The screen on the right is different depending on the environment.



! If the screen on the right is displayed, a correct IP address is not assigned. Follow the procedure from **2** again.

Notes Click the suitable environment where you use in, when the "Set Network Location" displays.

8 Start the web browser. If the web page is viewed, the setup is **completed**.

! If you can not connect, restart your computer.
 If you still have problems in connecting, refer to "Easy Setup (Client Manager)" or "Standard Setup" and complete setting.

