

*This manual explains how to connect the PC with which GW-USNano has been attached to the main unit such as a wireless LAN router.
 * "PLANEX Client Manager", the software attached with GW-USNano, runs on Windows 7/Vista/XP(32bit) SP3 or higher.
 * To install the driver for Windows 7(64bit)/Vista(64bit), refer to "Client Manager Help" - "Troubleshooting" - "When using Windows 64bit".
 * When using Mac OS X, or connecting a game device, or connecting a Wi-Fi supported mobile phone, or using XLink Kai, refer to the backside of this sheet.

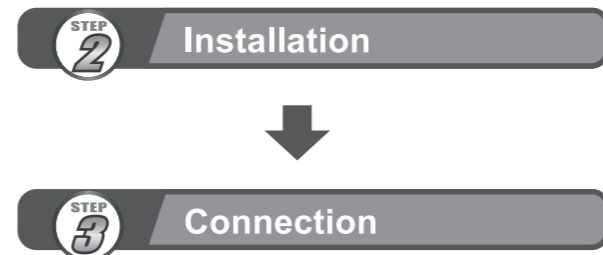
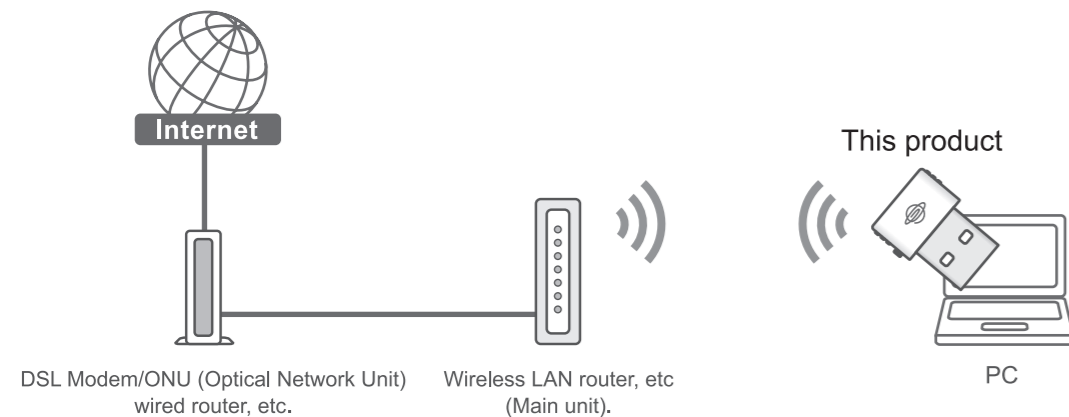
STEP 1

Confirming the procedure

Please confirm the flow of the following procedure before proceeding with the setup.

« Connecting the PC to the wireless LAN main unit. »

Connect the PC with GW-USNano to the main unit such as the wireless LAN router. Follow the setup procedure below.



STEP 2

Installation

Install the software following the procedure as follows.

*When using Mac OS X, connecting a game device, connecting a Wi-Fi supported mobile phone, or using XLink Kai, refer to the backside of this sheet.

Do not connect GW-USNano to your PC yet.

1 Turn on the PC, and set the attached CD-ROM in the PC's CD/DVD drive.

For Windows 7/Vista
 • Click "Run AutoLoader.exe" when "Autoplay" screen is displayed.

• Click [Yes] or [Allow] when "User Account Control" screen is displayed.

• If the menu screen is not displayed
 Open "Computer"(or "My Computer") and then double click the icon of CD/DVD drive.
 • If your PC does not have CD/DVD Drive, download the software from the following site.
<http://www.planex.net/download/wireless/gw-usnano.htm>

2 Click [Start Install].

3 Click [Next].

4 Click [Install].

5 Click [Finish].

Once the installation is completed, "PLANEX Client Manager" is launched. Move to **STEP 3**.

If the installation fails, refer to "Troubleshooting" - "When installation fails" on the backside of this sheet.

STEP 3

Connection

* Attach GW-USNano to the PC and then connect it to the wireless LAN router.

GW-USNano deploys a "WPS" function that assists you to easily set up the wireless LAN connection. Before proceeding with this procedure, confirm that the wireless LAN router (the main unit) supports WPS.

- * WPS (Wi-Fi Protected Setup) is a standard protocol to easily set up the security for wireless LAN device.
- * If you would like to do WPS connection with PIN code, refer to "Client Manager Help" - "Connect to the internet" and complete setting.

When your Wireless LAN router (the main unit) supports WPS → Move to "Easy Setup (WPS button)" or "Easy Setup (Client Manager)" on the back side of this sheet.

When your wireless LAN router (the main unit) does not support WPS → Move to "Standard Setup" on the back of this sheet.

Before proceeding with this procedure, confirm that the wireless LAN router (the main unit) connects to the Internet.
 Be sure to enable encryption (security).

Easy Setup (WPS button)

Connect to the wireless LAN by using the WPS button on GW-USNano and the WPS button on the wireless LAN router (the main unit).

1 Insert GW-USNano into the USB port of PC.

For Windows 7/Vista
 • A message such that "A new hardware is detected" is displayed on the screen. Move to next step.

For Windows Vista
 • Click [Continue] when "User Account Control" screen is displayed.

* Please be aware that it might be displayed in the taskbar at the bottom of the screen.

2 Click [Connect PC to the internet].

When GW-USNano is not inserted into the PC, the screen on the right is displayed. Insert GW-USNano into the PC and then click [OK].

For Windows 7/Vista 64bit, the screen on the right is displayed. Manually set up GW-USNano. For the setup procedure, refer to Help. Click [OK], and then the Help window is automatically launched. Once the installation is completed, start the procedure at **2**.

3 Click [Yes].

* If this window is not displayed, move to **4**.

For Windows 7/Vista
 • Click [OK] when the screen on the right is displayed.

4 With keeping the screen on the right displayed, move to **5**.

* If the screen on the right is closed, double-click "Client Manager Wizard" on the desktop, and start the procedure at **2**.

5 Press the WPS button on the wireless LAN router (the main unit).

* The position of the WPS button and the operating instruction differ depending on the wireless LAN router. For details, refer to the manual of your router.

6 After the operation **5** press and hold the WPS button on GW-USNano for 2 seconds.

GW-USNano searches for an access point, and when it is detected, "Found the WPS (PBC) connecting location." is displayed.

If you can not press the WPS button with your finger, use a pointed object such as a pen to press it. Do not use a sharp instrument such as a needle. Press the WPS button until you feel a 'click' feeling.

If the connection failed, please try again. If the connection is not established even after retry, follow the procedure below.
 ① Reboot the PC.
 ② Double-click "Client Manager Wizard" on the desktop, and start the procedure at **2**.

7 When connection is established, the screen on the right is displayed. Click [Close] after confirming that IP address subnet mask default gateway is assigned.

* The screen on the right is different depending on the environment.

If the screen on the right is displayed, a correct IP address is not assigned. Follow the procedure from **2** again.

Click the suitable environment where you use in, when the "setup for the place of network" displays.

8 Start the web browser. If the web page is viewed, the setup is completed.

If you can not connect, restart your computer. If you still have problems in connecting, refer to "Easy Setup (Client Manager)" or "Standard Setup" and complete setting.

