



For PC

PC Setting Guide

150Mbps supported Wireless LAN Simple Access Point



MZK-SA150N

Version: MZK-SA150N-L_QIG-B_V1

- This explains the required setting and how to use the product in order to use it correctly. Please complete the setting based on the manual. Also after setting, please keep this manual.
- For the settings and usages, which are not mentioned in this manual, please refer to the users manual. For the reference method of users manual, please refer to "How to read users manual".
- For the technical inquiries, please contact the support center on "Please read before beginning".

At first

- This sheet tells you how to connect this product and PC together. Read "Steps" below and complete setting.
- For features, parts, settings at the factory default, and bundled items, refer to "Start Guide".
- For the connection of game machine or iPhone, refer to "Start Guide".

Steps

STEP 1 Prepare internet environment

*Refer to accompanying sheet "Start Guide".

STEP 2 Connect this product to the internet

*Refer to accompanying sheet "Start Guide".

STEP 3 Connect PC to this product

Windows 7 / Vista

Refer to the front side of this sheet.

Windows XP, Mac OS X

Refer to the back side of this sheet.

Wireless LAN connection with WPS button

Refer to the back of this sheet.

NOTE WPS is the function which allows users to complete the settings for wireless LAN connection and security setting with button easily.

Prepare

Prepare the below before starting.

- MZK-SA150N
- AC Adapter (bundled)
- LAN Cable (bundled)
- Start Guide (This paper)
- PC with wireless LAN built-in (Windows 7 / Vista / XP, Mac OS X) or PC with WPS button built-in and with wireless LAN client.
- Internet environment

Check

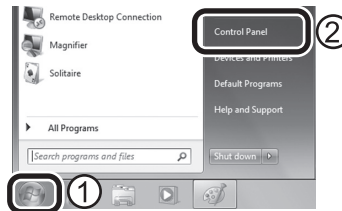
- If there is wireless LAN switch on PC, turn it on.
- If you would like to set this product with PC, game machine, or iPhone, turn security switch OFF.
- When you use the USB power cable, connect it with the USB port of devices.

STEP 3 Connect PC to this product

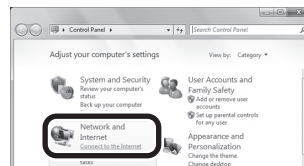
Windows 7

*Refer to "Start Guide" and complete "STEP 1" and "STEP 2" before starting.

- 1 ① Click "Start".
② Click "Control Panel".



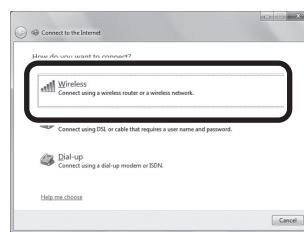
- 2 Click "Connect to the Internet".



*In Icon View, click "Network and Sharing Center" - "Connect to a network", and go to 4.

*If "Connect to the Internet" is not shown on the screen, click "View network status and tasks" - "Connect to a network", and go to 4.

- 3 Click "Wireless".



- 4 ① Click "ap-game-XXXXXX" from Network name (SSID)

*XXXXXX is different depending on the product.

- ② Tick "Connect automatically".
- ③ Click "Connect".



● Network name (SSID) is written on the bottom label.

Factory default value	Domain Name:
SSID:	IP address (Router mode):
User name: admin	IP address (PC mode):

● If Network name (SSID) is not displayed, click update button (↻).

- 5 ① Click "Wireless Network Connection" icon on the system tray.
② Confirm "Connected" is shown on the screen.



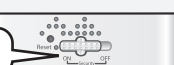
- 6 Start WEB browser and make sure it can be connected to the internet.

Setting is completed.

NOTE *If you fail to connect, refer to "Troubleshooting" on the back of this paper.

*If you are not connecting to the internet, turn "security switch" on.

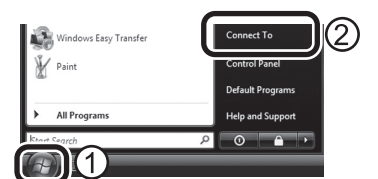
Switch is ON



Windows Vista

*Refer to "Start Guide" and complete "STEP 1" and "STEP 2" before starting.

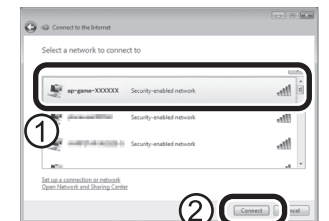
- 1 ① Click "Start".
② Click "Connect To".



- 2 ① Click "ap-game-XXXXXX" from Network name (SSID)

*XXXXXX is different depending on the product.

- ② Click [Connect].

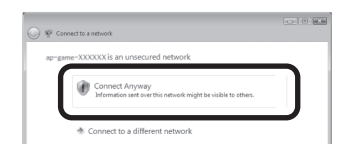


● Network name (SSID) is written on the bottom label.

Factory default value	Domain Name:
SSID:	IP address (Router mode):
User name: admin	IP address (PC mode):

● If Network name (SSID) is not displayed, click update button (↻).

- 3 Click "Connect Anyway".

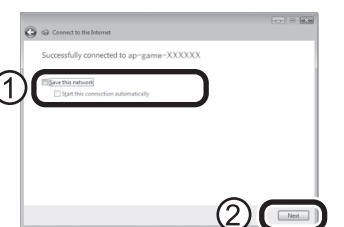


- 4 "Successfully connected to ap-game-XXXXXX" is displayed.

*XXXXXX is different depending on the product.



- 5 ① Tick "Save this network" and "Start this connection automatically".
② Click [Next].



- 6 Select the network location from "Home", "Work" or "Public location".



- 7 Once "User Account Control" is displayed, click "Continue".

- 8 Click [Close].

- 9 Start WEB browser and make sure it can be connected to the internet.

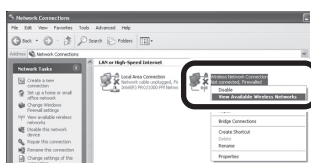
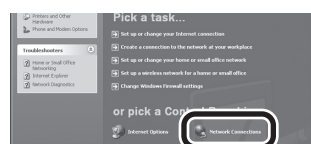
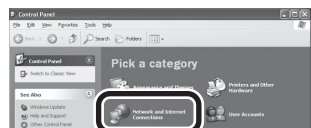
Setting is completed.

NOTE *If you fail to connect, refer to "Troubleshooting" on the back of this paper.

*If you are not connecting to the internet, turn "security switch" on.

Switch is ON





Hold for
more than
2 seconds

completed.

NOTE *If you fail to connect, refer to "Troubleshooting" on the back of this paper.

Troubleshooting

Here explains how to solve the problems about settings. Also for the other settings of this product, refer to "users manual". If you are not sure how to read "users manual", refer to "How to read Users Manual".

- **Power is not turned on.**
 - Make sure if AC adapter is inserted to the power point.
- **Can not connect to the internet.**
 - Make sure if the device or cable is set in the right location with "STEP2 Connect this product to the internet" of accompanying sheet "Start Guide".
 - Turn the power on this product on and back off.
 - If you acquire PC's IP address manually, make it automatic. If you don't know the setting method, refer to "How to connect to the internet" - "Using multiple game machines or PC" - "STEP 2 Prepare the PC for setting".
- **"ap-game-XXXXXX" is not displayed in the network list when doing wireless LAN setting.** (*"XXXXXX" is different depending on the product.)
 - Search again.
 - If "Security switch" on the side is "ON", turn it "OFF".
 - If there is distance or obstacles, go closer to the product where there is no obstacles, try once again.
 - Due to the radio wave from electronic microwave, the wireless network may be corrupted. Please try once again with some distance from the microwave.
 - If the security switch on the side of the product is turned ON, turn if OFF.
- **Still have problems...**
 - Reset this product. If you are not sure how you to reset this product, refer to "How to initialize".
- **If you would like to encrypt this product, refer to "internet connection method" on the user's manual.**

How to initialize

! Once it is initialized, all the information will be wiped off. If you need information there, take notes.

1. Make sure the power on the product is turned on.
2. Hold the reset button for 3 seconds.
3. If "Power" light is blinked, take your hand from the reset button,
4. Wait for a little while, and once the product is restarted, setting is completed.

If initial setting is completed, complete the setting before "STEP2 Connect this product to the internet" of accompanying sheet "Start Guide".

How to read Users Manual

If you would like to complete the detailed settings, refer to Users Manual on WEB.

View the manual on web

Please access our web site below.
<http://www.planex.net/download/wireless/mzk-sa150n.htm>

